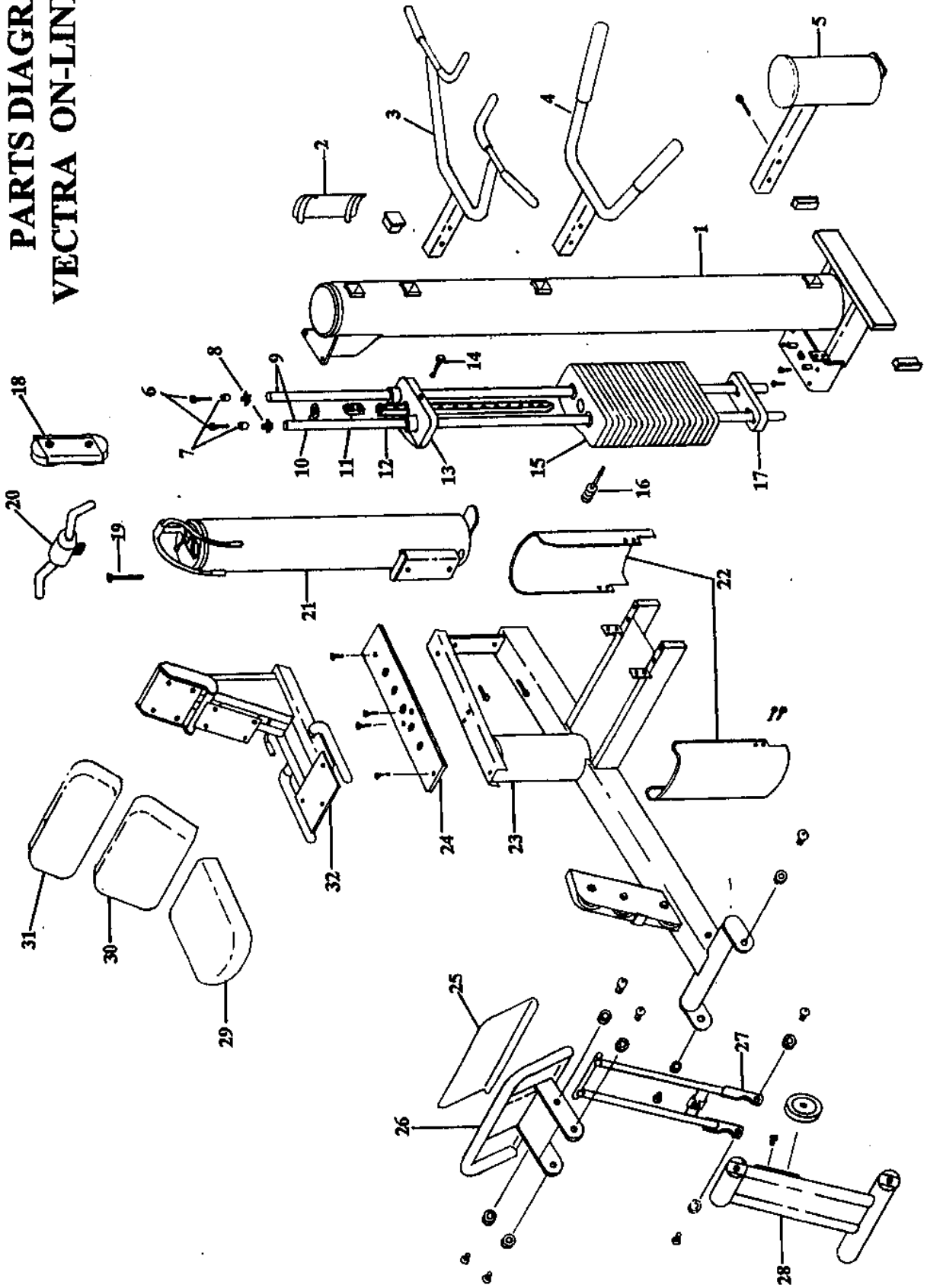


PARTS DIAGRAM VECTRA ON-LINE 1100



PARTS LIST

VECTRA ON-LINE 1100

ITEM	PART#	DESCRIPTION	QTY	ITEM	PART#	DESCRIPTION	QTY
1	26910	Main Column Assembly	1		22050	Trim Strip, .063" Black	2
	23550	Main Column Weldment	1	23	26930	Main Frame Assembly	1
	25220	Pulley 6" Dia.	1		23900	Main Frame Tub Weldment	1
	10580	Pulley 4.5" Dia.	1		10580	Pulley 4.5" Dia.	4
	10600	Locking Nut 3/8-16 Hex	2		10600	Locking Nut 3/8-16 Hex	7
	12760	Screw 3/8-16 x 1.75 Hex	2		12760	Screw 3/8-16 x 1.75 Hex	4
	13080	Tube Closure 1 x 3	2		11920	Freeway Bearing	2
	13090	Tube Closure 2 x 2	1		17160	Cable Tie 8.5"	1
	21090	Column Cap	1		22050	Trim Strip, .063 Black	1
	22100	Screw 3/8-16 x .5 Hex	1		26830	Leg Press Cable Assembly	1
2	26180	Access Door Assembly	3	24	26320	Plated Seat Adjustment Strip	1
3	26880	Chin Bar Assembly	1	25	25230	Leg Press Safety Tread	1
	23400	Chin Bar Assembly	1	26	26960	Foot Plate Assembly	1
	20890	Grip 7/8 ID x 9"	4		23600	Foot Plate Weldment	1
4	26870	Dip Bar Assembly	1		11920	Freeway Bearing	4
	23390	Dip Bar Weldment	1	27	26950	Pivot Lever Stop Assembly	1
	27270	Foam Grip 1.5 Dia x 10"	2		23650	Pivot Lever Stop Weldment	1
5	26860	Step Column Assembly	1		11920	Freeway Bearing	2
	23440	Step Column Weldment	1		28030	Leg Press Stop Bumper	1
	23460	Stop Cover	1		28040	Cable Tie 4"	3
	27280	Screw 3/8-16 x 3/4 Flat Head	2	28	26940	Main Pivot Lever Assembly	1
6	17080	Screw 5/16-18 x 1.5 Hex	2		23740	Main Pivot Lever Weldment	1
7	16520	Spacer .810 OD x .520 ID x .5	2		10580	Pulley 4.5" Dia.	1
8	11340	Tube Connector 5/16-18 x 1	2		10600	Locking Nut 3/8-16 Hex	1
9	21960	Guide Rod 74.74"	2		12760	Screw 3/8-16 x 1.75 Hex	1
10	26130	Top Plate Washer	1		27990	Christmas Tree Clip	1
11	20660	Top Plate Cable Retainer	1	29	10910	Seat Bottom Upholstery	1
12	20630	Selector Shaft	1	30	26980	Lumbar Seat Back Upholstery	1
13	26100	Top Plate Assembly	1	31	26990	Bicep Seat Back Upholstery	1
	26070	Top Plate	1	32	26970	Seat Assembly	1
	20620	Weight Plate Bushing	4		27800	Main Seat Weldment	1
14	29190	Screw 3/8-16 x 3 Hex	1		11760	Foam Grip 7/8 ID x 8"	2
15	17021	Vectra 10LB Weight Plate	10		18330	Tube Closure 1/2 x 1 1/2 Blue	2
	20620	Weight Plate Bushing	2 ea.		22100	Screw 3/8-16 x .5 Hex	2
16	20760	Selector Pin Assembly	1		24160	Pulley Pivot Bushing	4
17	20750	Weight Stack Bumper	1		27750	Seat Pivot Shaft	2
18	14180	Double Moving Pulley Assy.	1		17750	Shaft Retainer .5 Dia.	6
	20000	Double Moving Pulley Bracket	2		27900	Extension Spring 1.25"	1
	10580	Pulley 4.5" Dia.	2		37460	Bolted Seat Cover w/ Label	1
	10600	Locking Nut 3/8-16 Hex	2		29050	Label, Seat Instruction	1
	12760	Screw 3/8-16 x 1.75 Hex	2		27530	Bicep Seat Pad Weldment	1
19	14210	Screw 3/8-16 x 4 Hex Full Thrd	1		27600	Lumbar Seat Pad Weldment	1
20	25650	Cambered Bar Assembly	1		27650	Seat Fwd/Back Latch	1
	24100	Cambered Bar Weldment	1		27700	Seat Up/Down Latch	1
	11760	Foam Grip 7/8 ID x 8"	2	33	27310	Hardware Kit, Vectra 1100	1
	23330	Attachment Bar Pad	2		11410	Screw 3/8-16 x .75 Hex	6
	22110	Spring Loaded Plunger	1		13790	Screw 1/2-13 x 1 Button Head	8
21	26920	Bi/Tri Column Assembly	1		13010	Screw 3/8-16 x 2.75 Hex	6
	24050	Bi/Tri Column Weldment	1		20850	Screw 1/4-20 x .75 Hex	11
	10580	Pulley 4.5" Dia.	3		22100	Screw 3/8-16 x .5	8
	10600	Locking Nut 3/8-16 Hex	1	34	25190	Label, Large Vectra 1100	1
	12760	Screw 3/8-16 x 1.75 Hex	1	35	20860	Label, Vectra 8"	1
	22100	Screw 3/8-16 x .5 Hex	1	36	28010	Label, Warning: ...	1
	23300	Screw 3/8-16 x 1.25 Hex	2	37	28020	Label, Manufactured By: ...	1
	23930	Hose Retainer Mount Weldment	1	38	28870	Label, 1100 Wt. Stack Numbers 1	1
	27200	Cambered Bar Support Hose	1	39	29050	Label, 1100 Seat Instructions	1
	23990	Adjustable Cable End Bracket	1	40	27290	Manual, Vectra 1100	1
	26180	Access Door Assembly	1	41	27300	Poster, Vectra 1100	1
	27190	Column Cap	1				
	26840	Cable Assembly, 1100 Bi/Tri Col.	1				
22	26890	Weight Guard Assembly	2				
	24150	Weight Stack Guard	2				

Vectra On-Line 1100 Part Numbers and Prices

Vectra On-Line 1100	
Part #	Part Description
57900	Access Door (painted)
2.5AO	Add-on plate- 2.5 pound
5.0AO	Add-on plate- 5 pound
21770	Adjustable Pulley weldment (main column)- no pulley/hardware (uses 22030 bolt)
50600	Bearing- 608ZZ for leg press seat assy. (8 required- uses 50580, 50430, 20050)
11920	Bearing- freeway for most pivot points, used with #13790 button head bolts
26920	Bi/Tri Column assembly <comment>
48830	Bolt- 1/2" dia. x 3/8" long shoulder (as of 4/97)
13790	Bolt- 1/2-13 X 1 button head for most freeway bearing pivot points
20850	Bolt- 1/4 X 20 X .75 for mounting upholstery
22100	Bolt- 3/8-16 x 1/2 blk- frame OBSELETE (replaced with #55870)
55870	Bolt- 3/8-16 x 1/2 blk hex with flange for frame
11410	Bolt- 3/8-16 X 3/4 blk hex for frame OBSELETE (replaced with #55860)
55860	Bolt- 3/8-16 X 3/4 blk hex with flange for frame
27280	Bolt- 3/8-16 X 3/4 flat head 4800/1100 seat adjust plate & step col. cap
23300	Bolt- 3/8-16 X 1.25 to attach some pulleys (metal on 1 side)
52910	Bolt- 3/8-16 X 1.5 for columns, pulley assemblies (double, single, adj., etc.)
12760	Bolt- 3/8-16 X 1.75 for most pulley assemblies & column caps
15010	Bolt- 3/8-16 X 2.75 for 1100 step, chin & dip bar
29190	1650- 3 yards
14210	Bolt- 3/8-16 X 4 for most adjustable pulleys
17080	Bolt- 5/16-18 X 1.5 for guide rod threaded inserts
20050	Bolt- 5/16-18 X 3/4 hex- used w/608ZZ bearings on leg press seat assembly
13850	Bolt- slotted for old Ivanko version top plate (not in Encore's data base)
23990	Bracket for adjustable cable end (bi/tri)
20000	Bracket- for double-moving pulley (2 required)
20750	Bumper- bottom of weight stack OBSELETE (replaced with two each #57670)
47590	Bumper- for leg press down stop
57670	Bumper weight stack (two required)- replaces single piece 20750
24160	Bushing- nylon for leg press seat
20620	Bushing- weight plate (all) & top plate
26830	Cable - Leg press to weight stack- 315.25" long
26840	Cable- bi/tri station- 48.5" long
42160	Cable set 1100- complete
17160	Cable Tie
CBB	Cambered Bar (black only)
26880	Chin bar assembly
27190	Column Cap- for bi/tri column
21090	Column cap- main column
23460	Column Cap/Cover- for step column 1100
26870	Dip bar assembly
14180	Double Moving Pulley assembly- with pulleys & hardware
51070	Foot Plate assembly
53890	Foot Plate Safety Tread- Concluding Version (12/99)
11760	Grip- 7/8 I.D. X 8 inch- standard- REPLACED with #61890 "SS Cap" version
61890	Grip- 8-inch "SS Cap" version- replaces #11760
20890	Grip- 7/8" I.D. x 9" used on chin-up bar
55430	Guide Rod- 74.74 inches, includes tube connector, spacer & bolt
27310	Hardware/Bolt kit- 1100
27200	Hose- for cambered bar rest on bi/tri column
23950	Hose Retainer weldment
28020	Label- "Manufactured by..."
20860	Label- "Vectra" 8 inch
28010	Label- "Warning..." for wt. guard
25190	Label- large "On-Line 1100"
60590	Label- wt. stack number sheet LEG PRESS station-REVISED 12/04 <comment>

Vectra On-Line 1100 Part Numbers and Prices

Vectra On-Line 1100	
Part #	Part Description
60600	Label- wt. stack number sheet standard stacks -REVISED 12/04 <comment>
29050	Label/Decal- leg press seat adjust instructions
50250	Latch Bar- painted, for leg press seat
50380	Latch for painted leg press seat stop
50370	Latch for painted leg press seat up
27650	Latch- seat forward/back
27700	Latch- seat up/down
56090	Leg Press Pivot assembly- RETRO version for cable twist problem
50200	Leg Press Seat assembly- 4800/1100 (Revised 3-4-98) <comment>
50410	Leg Press Seat weldment
40210	Loctite 242- 50 ML
50350	Lumbar Seat weldment
26910	Main Column 1100
26930	Main Frame Leg Press assembly- 1100
50180	Main Pivot Lever assembly
27290	Manual- 1100
17340	Nut- 1/2-13 hex jam used with original slotted top plate bolt
13740	Nut- 1/4-20
50430	Nut- 5/16-18 hex locking for 608ZZ bearing
10600	Nut- locking 3/8-16 hex for most pulley assemblies
27530	O-Ring- 1 ID X 1/8 W neoprene for ORIGINAL selector pins
57570	Padding- center of cambered bar (1 per bar)- replaces 23330
23330	Padding- center of curl and lat bar, etc. Obsolete - replaced with 57570
26950	Pivot Lever Stop assembly
26320	Plated Seat Adjustment Strip
27990	Plug (Christmas tree)- black plastic for cable retainer openings
27300	Poster- 1100
10580	Pulley- 4.5-inch
25220	Pulley- 6 inch
20660	Retainer- for cable at top of weight stack
48340	Roll Pin- 5/16D X 1.25 for standard & new version leg developer
27910	Roll Pin- 5/32D X 7/8L for swivel pulleys, etc.
53890	Foot Plate Safety Tread- Concluding Version (12/99)
25230	Safety Tread- for foot plate OBSELETE (replaced with 53890- 12/99)
56400	Seat Adjustment Strip- plated, 1150/4850 (and upgraded 48/1100)
27550	Seat Pivot weldment- bicep pad
20760	Selector Pin- ORIGINAL Vectra Precision plates ONLY OUT OF STOCK
53600	Selector Pin- short (4-3/8 in shaft) ORIGINAL Vectra Precision 10 LBS plates ONLY
20630	Selector Shaft- standard for 210 and 260 pound weight stacks (20 hole)
27750	Shaft- .5 DIA X 10.35 for leg press seat pivot
17750	Shaft Retainer- .5 shaft (large) for most shafts
16520	Spacer- .81 X .52 X .5 nylon for guide rods
27900	Spring- ext. 1.25FL for seat adjust
26860	Step Column- 1100
48410	Tape- for calf block safety tread
28040	Tie- 4 inch plastic
26100	Top Plate (original)- weight stack
49090	Touch-Up Paint- Black bottle
20800	Touch-Up Paint- Black can
49100	Touch-Up Paint- Silver bottle
15520	Touch-Up Paint- Silver can
49080	Touch-Up Paint- White bottle
20790	Touch-Up Paint- White can
22050	Trim Strip- for weight guard (63" per guard- generic #-, not for specific location)
18330	Tube Closure/End Cap- 1/2 X 1 1/2 BLUE for adjustment levers
38900	Tube Closure/End Cap- 1 inch round

Vectra On-Line 1100	
Part #	Part Description
15780	Tube Closure/End Cap- 1 X 2 X 10-14GA used on Pinnacle Bench
13080	Tube Closure/End Cap- 1"x 3" for base of 1100 main column
27270	Tube Closure/End Cap- 1½ dia. X 10 for 1100 dip bar
13090	Tube Closure/End Cap- 2 X 2 X 14 GA to cover dip & pull-up openings
11340	Tube Connector- 5/16-18 X 1" threaded insert for guide rods
26990	Upholstery- seat back/biceps pad
26980	Upholstery- seat back/lumbar (lower back)
29240	Upholstery- seat bottom leg press (after Oct. 1997 with sealed bearings)
10910	Upholstery- seat bottom leg press (before Oct. 1997 w/no seat bearings)
51260	Upholstery Set- complete 1100 for post-10/97 with bearings in seat assy.
42290	Upholstery Set- complete 1100 for pre-10/97 w/o bearings in seat assembly
50580	Washer- .438 X .322 X.020- for leg press seat 608ZZ bearing
49310	Washer- 1.62 X 1.14 X .065 for leg press foot plate bearings
42240	Washer- 3/8 blk SAE flat, for some old-style frame bolts OBSOLETE
12620	Washer- 7/8-16 X ½ X 14GA
26130	Washer- neoprene bumper for top plate- standard
47090	Weight Plate- box of five original 10 pound plates
17021	Weight Plate- original 10 pound
17191	Weight Plate- original 15 pound