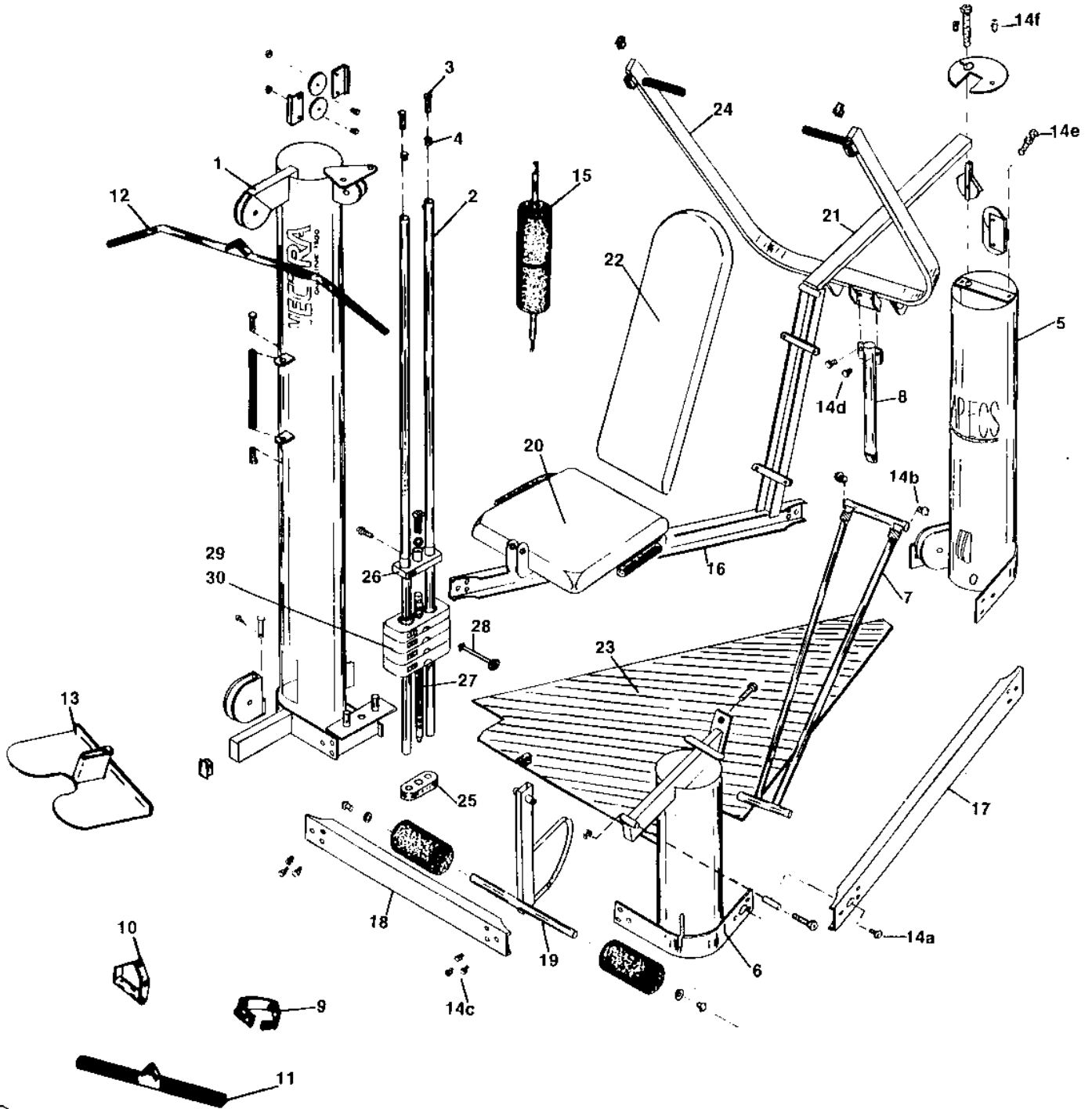


# VECTRA ON-LINE 1200 PARTS DIAGRAM



131 parts

# PARTS LIST

## VECTRA ON-LINE 1200

| ITEM | PART | DESCRIPTION                          | QTY | ITEM | PART | DESCRIPTION                          | QTY |
|------|------|--------------------------------------|-----|------|------|--------------------------------------|-----|
| → 1  | 1655 | Main Column Assembly                 | 1   |      | 1716 | Cable Tie 8.5 x .15                  | 1   |
|      | 1656 | Main Column Weldment                 | 1   |      | 1518 | Access Door Assembly                 | 1   |
|      | 1256 | Pulley Brkt Weldment Low Pulley      | 1   |      | 1733 | Label Apex                           | 1   |
|      | 1260 | Clevis Pin 1/2 x 4.0 Zn              | 1   |      | 1627 | Column Cap 7.00 Press Col.           | 1   |
|      | 1261 | Cotter Pin 5/32 x 1.0 Zn             | 1   | 6    | 1663 | Seat Column Assembly                 | 1   |
|      | 1058 | Pulley                               | 5   |      | 1664 | Seat Column Weldment                 | 1   |
|      | 1276 | Screw 3/8-16 x 1.75 Hex Blk Zn       | 5   |      | 1346 | Clamp Tube                           | 1   |
|      | 1060 | Nut 3/8-16 Hex Locking Blk           | 5   |      | 1376 | Screw 5/16-18 x 3.25                 | 1   |
|      | 1365 | Cable Splice Clip                    | 1   |      | 1064 | Nut 5/16-18 Hex Blk                  | 1   |
|      | 1450 | Screw 1/4-20 x .50 Php Zn            | 1   |      | 1058 | Pulley 4.5 Dia. x 1.0 W              | 1   |
|      | 1374 | Nut 1/4-20 Hex, 2 Way Lock Zn        | 1   |      | 1276 | Screw 3/8-16 x 2.75                  | 1   |
|      | 1418 | Double Moving Pulley Assembly        | 1   |      | 1060 | Nut 3/8-16 Hex                       | 1   |
|      | 1058 | Pulley                               | 2   |      | 1407 | Cable Assembly Leg Machine           | 1   |
|      | 1189 | Pulley Bracket Double Moving         | 2   |      | 1364 | Cable Retainer Leg Machine           | 1   |
|      | 1276 | Screw 3/8-16 x 1.75 Hex Blk Zn       | 2   |      | 1450 | Screw 1/4-20 x .50 Zn                | 1   |
|      | 1060 | Nut 3/8-16 Hex Locking Blk           | 2   |      | 1374 | Nut 1/4-20 Hex                       | 1   |
|      | 1650 | Cable Assembly Low Pulley            | 1   | 7    | 1598 | "A" Lever Weldment                   | 1   |
|      | 1649 | Cable Assembly High Pulley/Stack     | 1   | 8    | 1607 | "C" Tube Weldment                    | 1   |
|      | 1385 | Cable Stop                           | 1   | 9    | 1328 | Leg Strap Assembly                   | 1   |
|      | 1734 | Nut 1/2-13 Hex Jam Zn                | 1   | 10   | 1436 | D Handle Assembly                    | 1   |
|      | 1307 | Tube Closure 1 x 2 x 14Ga Blk        | 1   |      | 1434 | D Handle Formed                      | 1   |
|      | 1518 | Access Door Assembly                 | 2   |      | 1435 | D Handle Tube Assembly               | 1   |
|      | 1854 | Label Vectra 1200 (Large)            | 1   |      | 1580 | Spacer                               | 2   |
|      | 1855 | Label Set: Warning/Made By           | 1   |      | 1582 | Screw 1/4-20 x 1.0 Button Hd         | 2   |
|      | 1658 | Handle Assembly Main Column          | 1   | 11   | 1433 | Grip PVC                             | 1   |
|      | 1708 | Screw 5/16-18 x 1.5 Hex Blk Zn       | 2   |      | 1432 | Curl Bar                             | 1   |
|      | 1652 | Spacer .810 Od x .520 Id x .50 Nylon | 2   |      | 1280 | Curl Bar Weldment                    | 1   |
| → 2  | 1135 | Guide Rod                            | 2   | 12   | 1176 | Grip Foam 7/8 Id x 8 x .15 Blk       | 1   |
| 3    | 1708 | Screw 5/16-18 x 1.5 Hex Blk Zn       | 2   |      | 1477 | Lat Bar Assy                         | 1   |
| 4    | 1652 | Spacer .810 Od x .520 Id x .50 Nylon | 2   |      | 1175 | Lat Bar Weldment                     | 1   |
| 5    | 1660 | Rear Column Assembly                 | 1   |      | 1440 | Grip Notched                         | 2   |
|      | 1690 | Rear Column Weldment                 | 1   |      | 1176 | Grip Foam 7/8 Id x 8 x .15 Blk       | 2   |
|      | 1418 | Double Moving Pulley Assembly        | 1   | 13   | 1666 | Footplate Weldment                   | 1   |
|      | 1058 | Pulley                               | 2   | 14   | 1668 | Hardware Kit                         | 1   |
|      | 1189 | Pulley Bracket Double Moving         | 2   | 14a  | 1379 | Screw 1/2-13 x 1.0 Button Hd Blk Zn  | 6   |
|      | 1276 | Screw 3/8-16 x 1.75 Hex Blk Zn       | 2   | 14b  | 1437 | Screw 1/4-20 x .75 Php Zn            | 4   |
|      | 1060 | Nut 3/8-16 Hex Locking Blk           | 2   | 14c  | 1141 | Screw 3/8-16 x .75 Hex Blk Zn        | 19  |
|      | 1420 | Adjustable Pulley Assembly           | 1   | 14d  | 1691 | Screw 3/8-16 x .75 Soc Hd Blk Zn     | 2   |
|      | 1160 | Adjustable Pulley Brkt Weldment      | 1   | 14e  | 1669 | Screw 3/8-16 Mfd                     | 1   |
|      | 1058 | Pulley                               | 1   | 14f  | 1560 | Panel Fastener Black Arrow Clip      | 2   |
|      | 1276 | Screw 3/8-16 x 1.75 Hex Blk Zn       | 1   | 15   | 1676 | Ab Bar Assembly                      | 1   |
|      | 1060 | Nut 3/8-16 Hex Locking Blk           | 1   |      | 1600 | Ab Bar Weldment                      | 1   |
|      | 1421 | Screw 3/8-16 x 4.00 Hex Full Thd Zn  | 1   |      | 1034 | Foam Roller 7.0 Dia x 4.0 x 7/8 Id   | 2   |
|      | 1058 | Pulley                               | 3   |      | 1311 | Tube Closure 1 Dia x 14ga Blk        | 2   |
|      | 1276 | Screw 3/8-16 x 1.75 Hex Blk Zn       | 2   | 16   | 1522 | Frame Member Rear Col/Main           | 1   |
|      | 1060 | Nut 3/8-16 Hex Locking Blk           | 3   | 17   | 1673 | Frame Member Rear Col/Press          | 1   |
|      | 1405 | Cable Assembly "C" Pulley/Column     | 1   | 18   | 1523 | Frame Member Main Col/Press          | 1   |
|      | 1651 | Cable Assembly Press                 | 1   | 19   | 1412 | Leg Machine Assembly                 | 1   |
|      | 1365 | Cable Splice Clip                    | 1   |      | 1111 | Leg Machine Weldment                 | 1   |
|      | 1450 | Screw 1/4-20 x .50 Php Zn            | 1   |      | 1034 | Foam Roller 7.0 Dia. x 4.0 x 7/8 ID. | 2   |
|      | 1374 | Nut 1/4-20 Hex, 2 Way Lock Zn        | 1   |      | 1307 | Tube Closure 1 x 2 x 14 Ga           | 2   |
|      | 1662 | Bumper Press Arm Stop                | 1   |      | 1475 | Mach. Bushing 1 3/8 x 7/8 x 14 Ga    | 2   |
|      |      |                                      |     | 20   | 1311 | Tube Closure 1.0 dia. x 14 Ga        | 1   |
|      |      |                                      |     |      | 1671 | Seat Bottom Assembly                 | 1   |
|      |      |                                      |     |      | 1711 | Seat Bottom Leg Machine Upholstered  | 1   |

| ITEM | PART | DESCRIPTION                         | QTY | ITEM | PART | DESCRIPTION                      | QTY |
|------|------|-------------------------------------|-----|------|------|----------------------------------|-----|
|      | 1672 | Seat Handle Assembly                | 1   |      | 1176 | Grip Foam 7/8 Id x 8 x .15 Blk   | 2   |
|      | 1176 | Grip Foam 7/8 Id x 8 x .15 Blk      | 2   |      | 1192 | Bearing                          | 2   |
|      | 1102 | Seat Lock Arm Weldment              | 1   |      | 1578 | Tube Closure 1 x 2 x 11Ga        | 2   |
|      | 1775 | Shift Retainer .50 Dia              | 1   | 25   | 1129 | Bumper Weight Stack              | 1   |
|      | 1016 | Leg Machine Mount Weldment          | 1   | 26   | 1127 | Top Plate (w/screw)              | 1   |
|      | 1192 | Bearing                             | 2   | 27   | 1126 | Selector Shaft 20 Hole           | 1   |
|      | 1437 | Screw 1/4-20 x .75 Php Zn           | 6   | 28   | 1128 | Weight Stack.Pin 10 lb.          | 1   |
| 21   | 1599 | Seat Back, Weldment                 | 1   | 29   | 1125 | Weight Plate 10 Lb               | 12  |
| 22   | 1205 | Seat Back Incline Bench Upholstered | 1   | 30   | 1678 | Weight Plate 5 Lb                | 8   |
| 23   | 1693 | Floor PC Assembly 1200              | 1   | 31   | 1621 | Instructional Manual Vectra 1200 | 1   |
| 24   | 1674 | Press Yoke Assembly                 | 1   | 32   | 1727 | Poster Vectra 1200               | 1   |
|      | 1675 | Press Yoke Weldment                 | 1   | 33   | 1648 | Label Set: Wt. Numbers           | 1   |

## Vectra On-Line 1200 Part Numbers and Prices

| Vectra On-Line 1200 |   |
|---------------------|---|
| Part #              | Part Description  |
| 16760               | Ab Bar assembly   |
| 57900               | Access Door (painted)   |
| 2.5AO               | Add-on plate- 2.5 pound   |
| 5.0AO               | Add-on plate- 5 pound   |
| 14200               | Adjustable Pulley assembly- with pulley (adjustment bolt #14210 is separate)    |
| 11600               | Adjustable Pulley Bracket- no pulley or hardware                                |
| 15980               | A-Lever- pivots from base of seat assembly                                      |
| 11920               | Bearing- freeway for most pivot points, used with #13790 button head bolts      |
| 13790               | Bolt- 1/2-13 X 1 button head for most freeway bearing pivot points              |
| 20850               | Bolt- 1/4 X 20 X .75 for mounting upholstery                                    |
| 14370               | Bolt- 1/4-20 X .75 phillip zn   |
| 16910               | Bolt- 3/8-16 X .75 Soc Hd Blk Zn  |
| 11410               | Bolt- 3/8-16 X 3/4 blk hex for frame <b>OBSELETE</b> (replaced with #55860)     |
| 55860               | Bolt- 3/8-16 X 3/4 blk hex with flange for frame                                |
| 52910               | Bolt- 3/8-16 X 1.5 for columns, pulley assemblies (double, single, adj., etc.)  |
| 12760               | Bolt- 3/8-16 X 1.75 for most pulley assemblies & column caps                    |
| 14210               | Bolt- 3/8-16 X 4 for most adjustable pulleys                                    |
| 17080               | Bolt- 5/16-18 X 1.5 for guide rod threaded inserts                              |
| 13760               | Bolt- 5/16-18 X 3.25 used with pivot clamp tube                                 |
| 22590               | Bolt- 7/16-14 X 1.75 SHC for Ivanko top plate using aluminum shaft              |
| 16690               | Bolt- manufactured with welded nut  |
| 13850               | Bolt- slotted for old Ivanko version top plate (not in Encore, uses 17340 nut)  |
| 20000               | Bracket- for double-moving pulley (2 required)                                  |
| 16620               | Bumper- press arm stop  |
| 57670               | Bumper weight stack ( <b>two required</b> )- replaces single piece 20750        |
| 20620               | Bushing- weight plate (all) & top plate   |
| 16490               | Cable- high pulley- 114.5" long   |
| 16500               | Cable- low pulley- 145.5" long (10.0" stripped)                                 |
| 16510               | Cable- press to leg extension- 62.0" long (3.0" stripped)                       |
| 14050               | Cable- press to main column- 94.27" long  |
| 13640               | Cable Retainer- leg developer   |
| 42180               | Cable Set/Kit- 1200 complete  |
| 13650               | Cable Splice Clip- where 2 cables come together- uses #27990 plug               |
| 17160               | Cable Tie- to secure press arm stop/bumper                                      |
| 12600               | Clevis Pin- 1/2 X 4 Zn for low pulley bracket                                   |
| 16270               | Column Cap- press column  |
| 12610               | Cotter Pin- 5/32 X 1 Zn for low pulley bracket                                  |
| 16070               | C-Tube- attaches to press arm- press cable connects to this                     |
| 63540               | Curl Bar assembly- (straight) BLACK only  |
| 62000               | Handle- Single Grip 8-inch strap (replaces D-Handle)                            |
| 14180               | Double Moving Pulley assembly- with pulleys & hardware                          |
| 16930               | Floor Piece- 1200   |
| 10340               | Foam Roller   |
| 16660               | Footplate   |
| 15230               | Frame Member- main column to press column                                       |
| 15220               | Frame Member- rear column to main column  |
| 16730               | Frame Member- rear column to press column                                       |
| 13240               | Grip- 4 Inch for inner section of lat bar                                       |
| 11760               | Grip- 7/8 I.D. X 8 inch- standard- <b>REPLACED</b> with #61890 "SS Cap" version |
| 61890               | Grip- 8-inch "SS Cap" version- replaces #11760                                  |
| 22620               | Guide Rods- 79.70" does NOT include tube connector, spacer or bolt              |
| 16580               | Handle assembly- mounts on main column  |
| 16680               | Hardware Kit  |
| 17330               | Label- "Apecs"  |
| 28020               | Label- "Manufactured by..."   |
| 18540               | Label- "On-Line 1200" large   |
| 28010               | Label- "Warning..." for wt. guard   |

**Prices are subject to change without notification. Vectra store price takes precedence.**

## Vectra On-Line 1200 Part Numbers and Prices

| Part # | Part Description   |
|--------|--|
| 62640  | Lat Bar assembly   |
| 48350  | Leg Developer assembly with foam rollers OBSOLETE                                |
| 10160  | Leg Developer Mounting Bracket (banana)  |
| 48330  | Leg Developer w/o rollers OBSOLETE   |
| 54090  | Leg Developer- current version with contoured leg pads                           |
| 14070  | Leg extension- 57.5" long (12.5" stripped)                                       |
| 16710  | Leg/Ab Seat Bottom assembly- w/upholstery, handle, banana <comments>             |
| 16720  | Leg/Ab Seat Handle/Lock assembly- with lock/latch, no upholstery                 |
| 17110  | Leg/ab station seat bottom   |
| 54050  | Leg/Ankle Strap  |
| 12560  | Low Pulley Bracket   |
| 25850  | Low Pulley Bracket- 4½ Inch without pulley and hardware                          |
| 16550  | Main Column assembly   |
| 16210  | Manual- 1200   |
| 13740  | Nut- ¼-20 for leg developer cable retainer                                       |
| 17340  | Nut- ½-13 hex jam used with original slotted top plate bolt                      |
| 10640  | Nut- 3/8-16 Hex  |
| 10600  | Nut- locking 3/8-16 Hex for most pulley assemblies                               |
| 23330  | Padding- center of curl & lat bar, etc. <b>Obsolete</b> - replaced with 57570    |
| 57570  | Padding- center of curl and lat bar, etc. (1 per bar)- replaces 23330            |
| 15600  | Panel Fastener- black arrow clip to secure press column cap                      |
| 26310  | Pivot Bar- for leg/ab station seat assembly (uses #14500 screw)                  |
| 13460  | Pivot Clamp Tube- seat pivot   |
| 27990  | Plug (Christmas tree)- black plastic for cable retainer openings                 |
| 17270  | Poster- 1200   |
| 16740  | Press Yoke assembly  |
| 10580  | Pulley- 4.5-inch   |
| 16600  | Rear Column assembly   |
| 27910  | Roll Pin- 5/32D X 7/8L for swivel pulleys.                                       |
| 14500  | Screw- ¼-20 X .50 phillip used with leg developer cable retainer                 |
| 15890  | Screw- ¼-20 X 1.25 OPH for D-handle  |
| 11020  | Seat Arm Lock  |
| 15990  | Seat Back Support (weldment)   |
| 16630  | Seat Column assembly   |
| 11280  | Selector Pin- 10 pound plate version for Ivanko plates                           |
| 22550  | Selector shaft- aluminum, used w/Ivanko top plate (requires 22590 bolt)- see Ken |
| 11260  | Selector Shaft- round, used with Ivanko top plate and slotted cable stop bolt    |
| 17750  | Shaft Retainer- .5 shaft (large) for most shafts                                 |
| 15800  | Spacer- .615 X .25 X .375L nylon for D-handle                                    |
| 16520  | Spacer- .81 X .52 X .5 nylon for guide rods                                      |
| 11270  | Top Plate- Ivanko  |