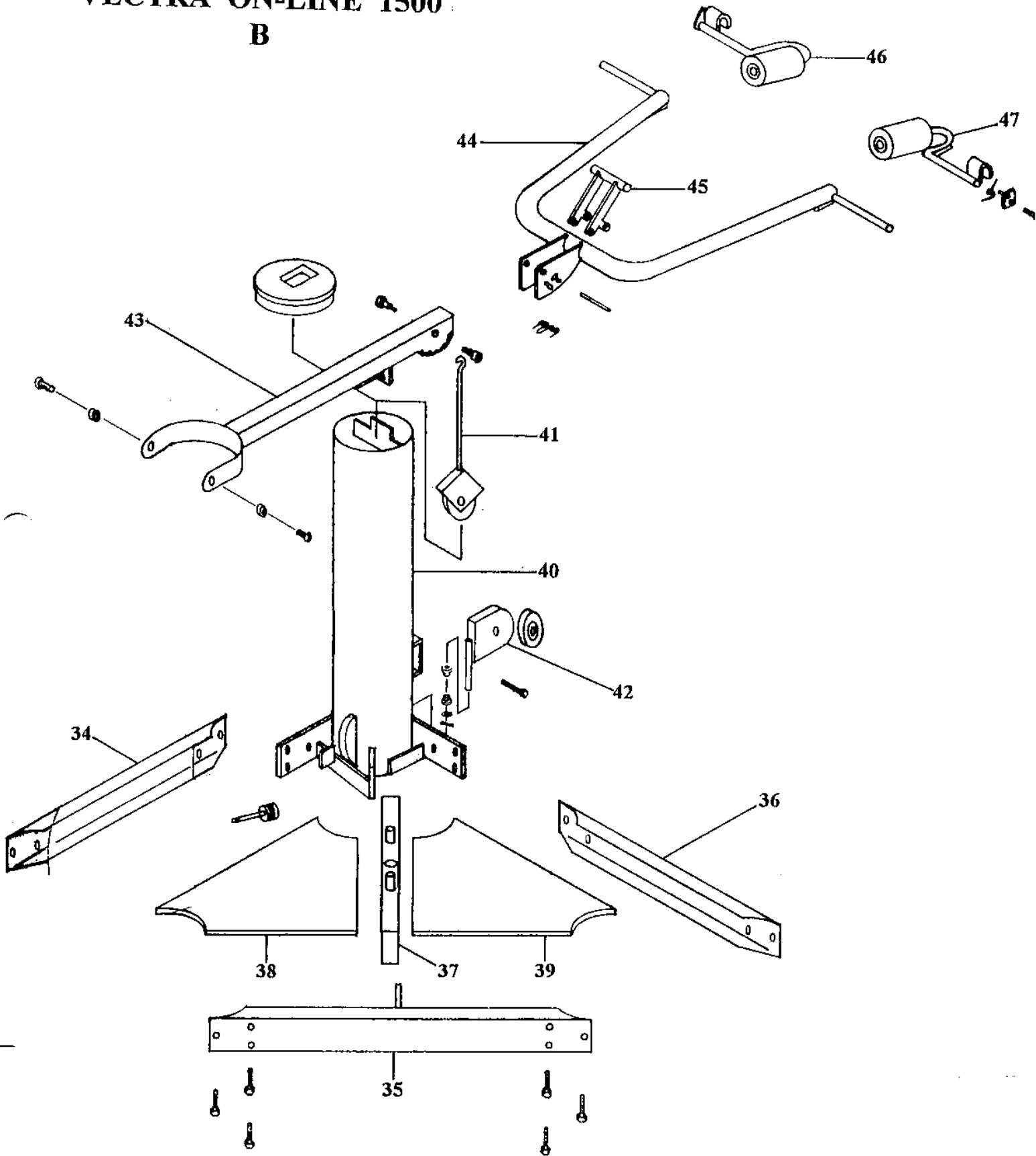
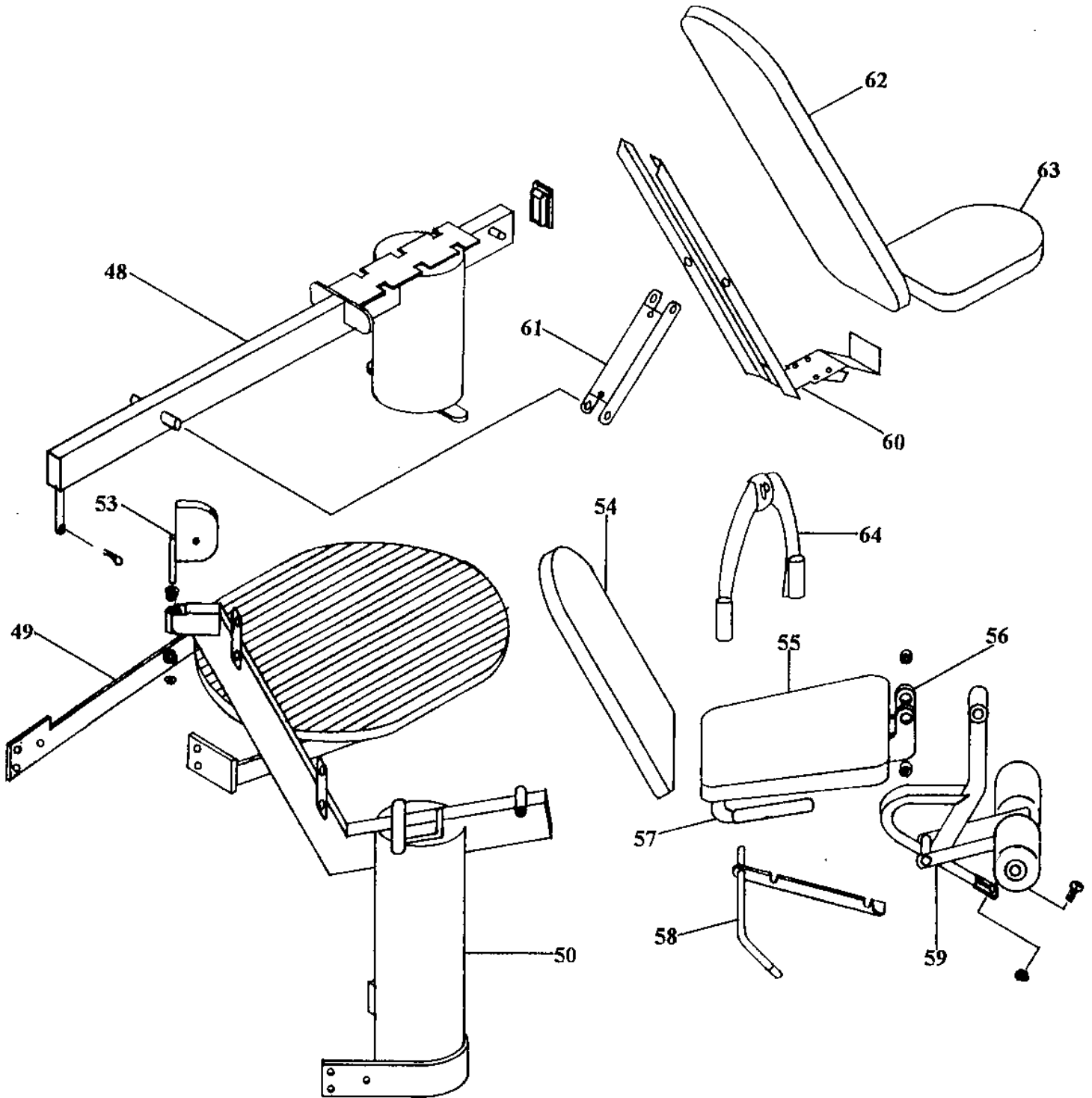


PARTS DIAGRAM
VECTRA ON-LINE 1500

PARTS DIAGRAM VECTRA ON-LINE 1500 B



**PARTS DIAGRAM
VECTRA ON-LINE 1500
C**



PARTS LIST

VECTRA ON-LINE 1500

ITEM	PART#	DESCRIPTION	QTY	ITEM	PART#	DESCRIPTION	QTY
1	14170	Main Column Assembly	1				
	11960	Main Column Weldment	1				
	10580	Pulley 4.5 " Dia.	8				
	10600	Locking Nut 3/8-16 Hex	6				
	12760	Screw 3/8 x 1.75 Hex	7				
	23300	Screw 3/8-16 x 1.25 Hex	1				
	14500	Screw 1/4-20 x .5 PHP	1				
	13740	Lock Nut 1/4-20	1				
	13090	Tube Closure 2 x 2	2				
	13650	Cable Splice Clip	1				
2	26180	Access Door Assembly	3				
3	14200	Adjustable Pulley Assembly	1				
	11600	Adjustable Pulley Weldment	1				
	10580	Pulley 4.5 " Dia.	1				
	10600	Locking Nut 3/8-16 Hex	1				
	12760	Screw 3/8-16 x 1.75 Hex	1				
4	14210	Screw 3/8-16 x 4 Hex Full Thrd	1				
5	14180	Double Moving Pulley Assembly	1				
	20000	Double Moving Pulley Bracket	2				
	10580	Pulley 4.5 " Dia.	2				
	10600	Locking Nut 3/8-16 Hex	2				
	12760	Screw 3/8-16 x 1.75 Hex	2				
6	14190	Single Moving Pulley Assembly	1				
	13570	Single Moving Pulley Bracket	1				
	10580	Pulley 4.5 " Dia.	1				
	10600	Locking Nut 3/8-16 Hex	1				
	12760	Screw 3/8-16 x 1.75 Hex	1				
	27990	Christmas Tree Clip	1				
7	14040	High Pulley/Stack Cable Assembly	1				
8	14050	AB/Main Cable Assembly	1				
9	14090	Low Pulley/M. Col/Leg Cable Assy.	1				
10	13280	Leg Strap Assembly	1				
	27520	O-ring 3/4 ID	1				
11	14360	D-Handle Assembly	1				
	14330	D-Handle Grip 5 "	1				
	14340	D-Handle, Formed	1				
	14350	D-Handle Tube, Steel .75" x 5"	1				
	15800	Spacer .605 OD x .25 ID x .375	1				
	15810	Tube Connector 1/4-20 x 3/4	2				
	15890	Screw 1/4-20 x 1.25	2				
	15910	Finishing Washer 1/4 Black Nylon	2				
12	14320	Curl Bar Assembly	1				
	12800	Curl Bar Weldment	1				
	11760	Foam Grip 7/8 ID x 8"	2				
	22110	Spring Loaded Plunger	1				
	23330	Attachment Bar Pad	2				
13	14770	Lat Bar Assembly	1				
	11750	Lat Bar Weldment	1				
	11760	Foam Grip 7/8 ID x 8"	2				
	13240	Foam Grip 7/8 ID x 4"	2				
	22110	Spring Loaded Plunger	1				
	23330	Attachment Bar Pad	2				
14	29280	Butterfly Seat Back	1				
15	10910	Butterfly Seat Bottom	1				
16	37790	Right Butterfly Arm Assembly	1				
	28820	Right Butterfly Arm Weldment	1				
	11450	Bronze Bushing	2				
	13100	Tube Closure 1.5" Dia.	1				
	27510	O-ring 1.375 ID	1				
	27910	Roll Pin 5/32 x 7/8	1				
	28151	Plated Pawl, Butterfly Arm	1				
	42220	Pawl Bumper Tube	1				
	28200	Pawl Spring, Butterfly Arm	1				
	28930	Dowel Pin .25 x 1"	1				
	28980	Label, Butterfly Arm "Arc"	1				
17	28910	Right Butterfly Arm Cam Assembly	1				
	28800	Right Butterfly Arm Cam Weldment	1				
	11450	Bronze Bushing	1				
	13740	Lock Nut 1/4-20 Hex	1				
	14500	Screw 1/4-20 x .5 Php	1				
	28990	Butterfly Cam Bumper	1				
18	37890	Left Butterfly Arm Assembly	1				
	28810	Left Butterfly Arm Weldment	1				
	11450	Bronze Bushing	2				
	13100	Tube Closure 1.5" Dia.	1				
	27910	Roll Pin 5/32 x 7/8	1				
	28151	Plated Pawl, Butterfly Arm	1				
	42220	Pawl Bumper Tube	1				
	28200	Pawl Spring, Butterfly Arm	1				
	28930	Dowel Pin .25 x 1 "	1				
	28980	Label, Butterfly Arm "Arc"	1				
19	28920	Left Butterfly Arm Cam Assembly	1				
	28790	Left Butterfly Arm Cam Weldment	1				
	11450	Bronze Bushing	1				
	13740	Lock Nut 1/4-20 Hex	1				
	14500	Screw 1/4-20 x .5 Php	1				
	28990	Butterfly Cam Bumper	1				
20	16460	Butterfly Arm Pad Assembly	2				
	16470	Butterfly Arm Pad	1				
	16450	Butterfly Arm Pad Backing	1				
	15890	Screw 1/4-20 x 1.25	3				
	15910	Finishing Washer, 1/4 Black Nylon	3				
21	14240	Upper Stack Support Assembly	1				
	11330	Upper Stack Support Weldment	1				
	10580	Pulley 4.5 " Dia.	1				
	10600	Locking Nut 3/8-16 Hex	1				
	12760	Screw 3/8-16 x 1.75 Hex	1				
22	17080	Screw 5/16-18 x 1.5 Hex	2				
23	16520	Spacer .810 OD x .520 ID x .5	2				
24	11340	Tube Connector 5/16-18 x 1"	2				
25	22620	Guide Rod 79.70"	2				
26	20660	Top Plate Cable Retainer	1				
27	26130	Top Plate Washer	1				
28	20630	Selector Shaft	1				
29	29190	Screw 3/8-16 x 3" Hex	1				
30	26100	Top Plate Assembly	1				
	26070	Painted Top Plate	1				
	20620	Weight Plate Bushing	4				
31	17021	10 LB Weight Plate Assembly	20				
	29100	10 LB Weight Plate	1 ca.				
	20620	Weight Plate Bushing	2 ea.				
32	20760	Selector Pin Assembly	1				
33	20750	Weight Stack Bumper	1				
34	15240	Main Col.-Press Col. Frame Member	1				
35	15280	Main-Leg/AB Frame Weldment	1				
36	15230	Leg/AB/Press Frame Member	1				
37	15310	Stack Base Frame Weldment	1				
38	13820	Floor Piece, Left	1				
39	13830	Floor Piece, Right	1				
40	43440	Press Column Assembly	1				

ITEM	PART#	DESCRIPTION	QTY
	43390	Press Column Weldment	1
	10580	Pulley 4.5" Dia.	2
	10600	Locking Nut 3/8-16 Hex	2
	12620	Machine Bushing 7/8 x 1/2	1
	12760	Screw 3/8-16 x 1.75 Hex	2
	17160	Cable Tie 8.5"	1
	17410	Press Column Cap	1
41	17420	Tension Rod Assembly	1
	17400	Tension Rod Weldment	1
	10580	Pulley 4.5" Dia.	1
	10600	Locking Nut 3/8-16 Hex	1
	12760	Screw 3/8-16 x 1.75 Hex	1
42	25850	Low Pulley Weldment	1
	24160	Pulley Pivot Bushing	2
	27910	Roll Pin 5/32 x 7/8	1
43	43450	Press Lever Arm Assembly	1
	43350	Press Lever Arm Weldment	1
	11920	Freeway Bearing	2
	13090	Tube Closure 2 x 2	1
44	43460	Press Arm Assembly	1
	43380	Press Arm Weldment	1
	40220	Shoulder Screw 1/2 Dia x 3/8L 3/8-16	2
	11760	Foam Grip 7/8 ID x 8"	2
	13110	Tube Closure 1" Dia.	2
	15650	Rivet .125 x .375 Aluminum	2
	17890	Grooved Shaft 5/16 x 3.25	1
	17900	Torsion Spring	1
	17920	Bottom Shield, ABS Plastic	1
	17930	Spring Pin .25 x 2.75 Black	1
	17950	Nylon Washer	4
	17990	E-Ring 5/16 Shaft x .035 Thk	2
	42250	Tube Closure 1.75 Dia.	2
45	43430	Press Latch Weldment	1
46	41430	Left Squat Attachment Assembly	1
	41410	Left Squat Attachment Weldment	1
	10340	Foam Roller 4 x 7 x .75 Hole	1
	29600	Roller Pad Retainer Washer	1
	13110	Tube Closure 1" Dia.	1
	41530	Squat Attachment Latch	1
	41540	Spring Pin .25 x .75	1
	41550	Left Squat Torsion Spring	1
	27330	Shoulder Screw 5/16D x .625 1/4-20	1
	41470	Label, Left Squat	1
47	41440	Right Squat Attachment Assembly	1
	41420	Right Squat Attachment Weldment	1
	10340	Foam Roller 4 x 7 x .75 Hole	1
	29600	Roller Pad Retainer Washer	1
	13110	Tube Closure 1" Dia.	1
	41530	Squat Attachment Latch	1
	41540	Spring Pin .25 x .75	1
	41550	Right Squat Torsion Spring	1
	27330	Shoulder Screw 5/16D x .625 1/4-20	1
	41470	Label, Right Squat	1
48	14220	Bench Rail Assembly	1
	12260	Bench Rail Weldment	1
	10640	Locking Nut 5/16-18 Hex	2
	13080	Tube Closure 1 x 3	1
49	10670	Platform Assembly	1
	14480	Platform Frame Weldment	1
	14620	Platform Floor	1
	20850	Screw 1/4-20 x .75 Hex	4
50	15320	Leg/AB Station Assembly	1
	10410	Leg/AB Station Weldment	1
	10580	Pulley 4.5" Dia.	2
	10600	Locking Nut 3/8-16 Hex	1
	13650	Cable Splice Clip	1
	14500	Screw 1/4-20 x .5 Php	1
	13740	Locking Nut 1/4-20 Hex	1
	15010	Screw 3/8-16 x 2.75 Hex	1
	15780	Tube Closure 1 x 2	1

ITEM	PART#	DESCRIPTION	QTY
51	14070	1500 Leg Cable Assembly	1
52	14080	1500 AB Cable Assembly	1
53	29010	AB Swiveling Pulley Assembly	1
	28100	AB Swiveling Pulley Weldment	1
	10580	Pulley 4.5" Dia.	1
	10600	Locking Nut 3/8-16 Hex	1
	12760	Screw 3/8-16 x 1.75 Hex	1
54	10020	Leg/AB Station Seat Back	1
55	17110	Leg/AB Station Seat Bottom	1
	20850	Screw 1/4-20 x .75 Hex	6
56	10160	Leg Machine Mount Weldment	1
	11920	Freeway Bearing	2
57	15960	Seat Handle Weldment	1
	11760	Foam Grip 7/8 ID x 8"	2
58	11020	Seat Arm Lock Weldment	1
	17750	Shaft Retainer .5 Dia.	1
	18330	Tube Closure 1/2 x 1 1/2 Blue	2
59	22970	Adjustable Leg Developer Assembly	1
	22920	Adj. Leg Developer Weldment	1
	13790	Screw 1/2-13 x 1" Button Head Black	2
	10340	Foam Roller 4 x 7 x .75 Hole	2
	29600	Roller Pad Retainer Washer	2
	13110	Tube Closure 1" Dia.	2
	22910	Leg Machine Bumper	1
	23090	Spring Pin .313 x 2.25	1
	13740	Locking Nut 1/4-20 Hex	1
	14500	Screw 1/4-20 x .5 Php	1
60	13530	Bench Seat Frame Weldment	1
	17750	Shaft Retainer .5 Dia.	2
	18110	Bench Pivot Shaft	1
61	18130	Back Brace, Bench	1
	18260	Screw 5/16-18 x 2.5 Hex	2
62	29230	Incline Bench Seat Back	1
63	29240	Incline Bench Seat Bottom	1
64	13270	AB Crunch Strap Assembly	1
	27520	O-Ring 3/4 ID	1
65	15350	1500 Hardware Kit	1
	11410	Screw 3/8-16 x .75 Hex	20
	12340	Cotter Pin 3/16 x 1.5	2
	13290	Hairpin Cotter 1/2 Shaft	1
	13750	Machine Bushing 1/2 x 1	2
	13790	Screw 1/2-13 x 1 Button Head Black	2
	26310	Leg Developer Pivot Bar	1
	14500	Screw 1/4-20 x .5 Php	1
	17750	Shaft Retainer .5 Dia.	1
	20850	Screw 1/4-20 x .75 Hex	23
	22100	Screw 3/8-16 x .5 Hex	2
	24160	Pulley Pivot Bushing	2
	40220	Shoulder Screw 1/2D x 3/8L 3/8-16	2
66	18480	Label, Vectra 1500 Large	1
67	20860	Label, Vectra 8 "	1
68	28010	Label, Warning :	1
69	28020	Label, Manufactured By:	1
70	22230	Label, Weight Plate Numbers	1
71	15490	Instruction Manual, Vectra 1500	1
72	17210	Poster, Vectra 1500	1

Vectra On-Line 1500	
Part #	Part Description
69020	Ab Crunch Strap
29010	Ab Swivel Pulley assembly
28100	Ab Swivel Pulley bracket- without pulley & hardware
57900	Access Door (painted)
2.5AO	Add-on plate- 2.5 pound
5.0AO	Add-on plate- 5 pound
14200	Adjustable Pulley assembly- with pulley (adjustment bolt #14210 is separate)
11600	Adjustable Pulley Bracket- no pulley or hardware
11920	Bearing- freeway for most pivot points, used with #13790 button head bolts
14220	Bench assembly- without upholstery
18130	Bench Back Brace
12260	Bench Rail weldment
13530	Bench Seat Frame
21920	Bolt- 1/4-20 X 1.25 hex for lat hold down
48830	Bolt- 1/2" dia. X 3/8 long shoulder for press handle
13790	Bolt- 1/2-13 X 1 button head for most freeway bearing pivot points
20850	Bolt- 1/4 X 20 X .75 for mounting upholstery
22100	Bolt- 3/8-16 x 1/2 blk for frame OBSOLETE (replaced with #55870)
55870	Bolt- 3/8-16 x 1/2 blk hex with flange for frame
11410	Bolt- 3/8-16 X 3/4 blk hex for frame OBSOLETE (replaced with #55860)
55860	Bolt- 3/8-16 X 3/4 blk hex with flange for frame
23300	Bolt- 3/8-16 X 1.25 to attach some pulleys (metal on 1 side)
52910	Bolt- 3/8-16 X 1.5 for columns, pulley assemblies (double, single, adj., etc.)
12760	Bolt- 3/8-16 X 1.75 for most pulley assemblies & column caps
15010	Bolt- 3/8-16 X 2.75, used on leg/ab station
29190	Bolt- 3/8-16 X 3 for top plate
14210	Bolt- 3/8-16 X 4 for most adjustable pulleys
27330	Bolt- 5/16 X .625, 1/4-20 shoulder for Squat Latch
17080	Bolt- 5/16-18 X 1.5 for guide rod threaded inserts
18260	Bolt- 5/16-18 X 2 1/2 hex for bench strut
22590	Bolt- 7/16-14 X 1.75 SHC for Ivanko top plate using aluminum shaft
40220	Bolt- shoulder 1/2 dia. X 3/8 L x 3/8-16 OBSOLETE (replace by 48830)
13850	Bolt- slotted for old Ivanko version top plate (uses 17340 nut) (not in Encore)
20000	Bracket- for double-moving pulley (2 required)
20750	Bumper- bottom of weight stack OBSOLETE (replaced with two each #57670)
28990	Bumper- for butterfly cam & leg/ab seat rest
42220	Bumper Tube- for butterfly arm pawl
57670	Bumper weight stack (two required)- replaces single piece 20750
54130	Bumper/Plug- new 3/4 inch stem version for b/fly cam and calf/row block
11450	Bushing- bronze for butterfly cams
43780	Bushing- nylon for butterfly arm
24160	Bushing- nylon for pivot pulley
20620	Bushing- weight plate (all) & top plate
37890	Butterfly Arm assembly- left-side
37790	Butterfly Arm assembly- right-side for
28920	Butterfly Cam assembly- left-side
28910	Butterfly Cam assembly- right-side
14050	Cable- "C" pulley- 94.27" long
14080	Cable- ab crunch- 96.0" long
28840	Cable- butterfly station- 70.84" long
14020	Cable- butterfly station pre-ARC system- 76.84" long (5.5" stripped on each side)
14040	Cable- high pulley- 219.7" long
14040	Cable- high pulley- 219.7" long
14090	Cable- low pulley- 149.5" long (24.0" stripped)
14060	Cable- press column for machines prior to 1990 ONLY- 24.25" long
13640	Cable Retainer- old style leg developer and butterfly cam

Vectra On-Line 1500	
Part #	Part Description
50660	Cable Set- 1500 pre-ARC system
42150	Cable Set- 1500 with ARC system
13650	Cable Splice Clip- where 2 cables come together- uses #27990 plug
17160	Cable Tie
17640	Calf/Row Block- 1500
CGPB	Close Grip Press Attachment Set- Black- allows close grip exercises on press arms
CGPCP	Close Grip Press Attachment Set- Classic Pewter- for close grip exercises on press arms
CGPSS	Close Grip Press Attachment Set- Sterling Silver- for close grip exercises on press arms
CGPW	Close Grip Press Attachment Set- White- allows close grip exercises on press arms
65570	Close Grip Press Attachment- right-side
65580	Close Grip Press Attachment- left-side
17410	Column Cap- for press station
12340	Cotter Pin- 3/16 X 1.5 inch for butterfly arms/cams (used w/#13750 washer)
13290	Cotter Pin- hairpin for 1500 bench
17920	Cover/Shield- plastic for press adjust (early version)
63540	Curl Bar assembly- (straight) BLACK only
14180	Double Moving Pulley assembly- with pulleys & hardware
17990	E-Ring- 5/16 X .035 for press adjust
13820	Floor Piece/Board- left side
13830	Floor Piece/Board- right side
10340	Foam Roller
15280	Frame Member (weldment)- main column to leg/ab column (45.32 inches)
15230	Frame Member- leg/ab column to press column (29.61 inches)
15240	Frame Member- main column to press column (26.52 inches)
15310	Frame Member- stack base
13240	Grip- 4 Inch for inner section of lat bar
11760	Grip- 7/8 I.D. X 8 inch- standard- REPLACED with #61890 "SS Cap" version
61890	Grip- 8-inch "SS Cap" version- replaces #11760
22620	Guide Rod- 79.70" does NOT include tube connector, spacer or bolt
62000	Handle- Single Grip 8-inch strap (replaces D-Handle)
15350	Hardware/Bolt Kit- 1500
28020	Label- "Manufactured by..."
20860	Label- "Vectra" 8 inch
28010	Label- "Warning..." for wt. guard
48950	Label- "Warning..." for bench
28980	Label- "Arc" for butterfly arm
18480	Label- Large "Vectra 1500"
43820	Label- left-side squat
43830	Label- right-side squat
60600	Label- wt. stack number sheet standard stacks -REVISED 12/04 <comment>
62640	Lat Bar assembly
41800	Lat Hold Down- deluxe version
41530	Latch- Squat Attachment left & right- for original version squats only
22970	Leg Developer assembly OBSOLETE (replaced with #48350)
48350	Leg Developer assembly with foam rollers OBSOLETE
48280	Leg Developer Mounting Bracket (banana)
48330	Leg Developer w/o rollers OBSOLETE
54090	Leg Developer- current version with contoured leg pads
14070	Cable- Leg extension- 57.5" long (12.5" stripped)
16710	Leg/Ab Seat Bottom assembly- w/upholstery, handle, banana <comments>
16720	Leg/Ab Seat Handle/Lock assembly- with lock/latch
15320	Leg/Ab Station assembly
17110	Upholstery - Leg/ab station seat bottom
54050	Leg/Ankle Strap
25850	Low Pulley Bracket- 4½ Inch without pulley and hardware
12560	Low Pulley Bracket OBSOLETE

Vectra On-Line 1500	
Part #	Part Description
14170	Main Column assembly
15490	Manual- On-line 1500
17340	Nut- 1/2-13 hex jam used with original slotted top plate bolt
13740	Nut- 1/4-20
10600	Nut- locking 3/8-16 hex for most pulley assemblies
50430	Nut- locking 5/16-18 for bench strut bolt
27520	O-Ring- .75 ID for leg strap and ab strap
27530	O-Ring- 1 ID X 1/8 W neoprene for ORIGINAL selector pins
27510	O-Ring- 1.375 ID for butterfly arm
57570	Padding- center of curl and lat bar, etc. (1 per bar)- replaces 23330
23330	Padding- center of curl and lat bar, etc. Obsolete - replaced with 57570
28151	Pawl- for butterfly arms
15640	Pin- retainer pin for single piece squat attachment
28930	Pin/Dowel- .25 DIA X 1 for butterfly arm pawl
26310	Pivot Bar- for leg/ab station seat assembly (uses #14500 screw)
10670	Platform assembly
14620	Platform Floor Board (only)
14480	Platform weldment (only)
27990	Plug (Christmas tree)- black plastic for cable retainer openings
17210	Poster- On-line 1500
43460	Press Arm assembly
43440	Press Column assembly
43430	Press Latch weldment
43450	Press Lever assembly- aka pivot arm
10580	Pulley- 4.5-inch
41880	Release Pawl/Lever- for adjustable lat hold down
20660	Retainer- for cable on leg developer and top of weight stack
48340	Roll Pin- 5/16D X 1.25 for standard & current version leg developer
27910	Roll Pin- 5/32D X 7/8L for swivel pulleys, butterfly arm pawls, etc.
47820	Safety Tread- for calf/row block
14500	Screw- 1/4-20 X .50 phillip for seat pivot bar
15890	Screw- 1/4-20 X 1.25 OPH for butterfly arm pads and D-handle
11020	Seat Arm Lock weldment
15960	Seat Handle weldment
20760	Selector Pin- ORIGINAL Vectra Precision plates ONLY OUT OF STOCK
53600	Selector Pin- short (4-3/8 in shaft) ORIGINAL Vectra Precision 10 LBS plates ONLY
22550	Selector shaft- aluminum, used w/lvanko top plate (requires 22590 bolt)- see Ken
20630	Selector Shaft- standard for 210 and 260 pound weight stacks (20 hole)
18110	Shaft- .05 DIA used on bench rail
17890	Shaft- 5/16 X 3.25 grooved, used in press arm adjustment <comment>
17750	Shaft Retainer- .5 shaft (large) for most shafts
60510	Single Moving Pulley assembly- with pulley & hardware
60500	Single Moving Pulley bracket- no pulley & hardware
15800	Spacer- .615 X .25 X .375L nylon for D-handle
16520	Spacer- .81 X .52 X .5 nylon for guide rods
28200	Spring- butterfly arm pawl
17930	Spring Pin- .25 X 2.75 for lat/leg hold down & press handle
41540	Spring Pin- used on original version squat latch
50680	Spring- squat latch ORIGINAL versin LEFT-side (modified)
50690	Spring- squat latch ORIGINAL versin RIGHT-side (modified)
17900	Spring- torsion for press adjust (Ken has these)
41430	Squat Attachment- left-side
15430	Squat Attachment- original SINGLE/Original piece
41440	Squat Attachment- right-side
17420	Tension Rod Pulley Bracket assembly- w/pulley hooks onto press pivot
17400	Tension Rod Pulley Bracket weldment- w/o pulley- hooks onto press pivot

Vectra On-Line 1500	
Part #	Part Description
28040	Tie- 4 inch plastic
26100	Top Plate (original)- weight stack
49090	Touch-Up Paint- Black bottle
20800	Touch-Up Paint- Black can
49100	Touch-Up Paint- Silver bottle
15520	Touch-Up Paint- Silver can
49080	Touch-Up Paint- White bottle
20790	Touch-Up Paint- White can
22050	Trim Strip- for leg/ab station, calf/row block (generic#, not for specific location)
18330	Tube Closure/End Cap- ½ X 1½ BLUE for adjustment levers
53940	Tube Closure/End Cap- 1 inch round for current squat attachments (9/00)
15780	Tube Closure/End Cap- 1 X 2 X 10-14GA, used on bench & older press arms
13110	Tube Closure/End Cap- 1" DIA X 14GA use on press adjust
42250	Tube Closure/End Cap- 1.75 inch for end of press handle
13080	Tube Closure/End Cap- 1"x 3" for bench rail
13100	Tube Closure/End Cap- 1½ X 14 GA
13090	Tube Closure/End Cap- 2 X 2 X 14GA for main column at b/fly & press pivot
51330	Tube Closure/End Cap- round single piece closure/retainer for foam rollers
15810	Tube Connector- 1/4-20 X 3/4 threaded insert for D-handle
11340	Tube Connector- 5/16-18 X 1" threaded insert for guide rods
16470	Upholstery- butterfly arm main pad (only)
16460	Upholstery- butterfly arm pad (2 required)
16450	Upholstery- butterfly arm pad backing (only)
29230	Upholstery- seat back bench
59200	Upholstery- seat back butterfly station
10020	Upholstery- seat back leg/ab station
29240	Upholstery- seat bottom bench
10910	Upholstery- seat bottom butterfly station
42280	Upholstery Set- 1500
14240	Upper Stack Support assembly- with pulley
11330	Washer- .688 X .39 X .03 black nylon for C-1 bench
42240	Washer- 3/8 blk SAE flat, for some old-style frame bolts OBSOLETE
12620	Washer- 7/8-16 X ½ X 14GA
17950	Washer- black nylon
15910	Washer- finishing for D-handle and butterfly arm pads
26130	Washer- neoprene bumper for top plate- standard