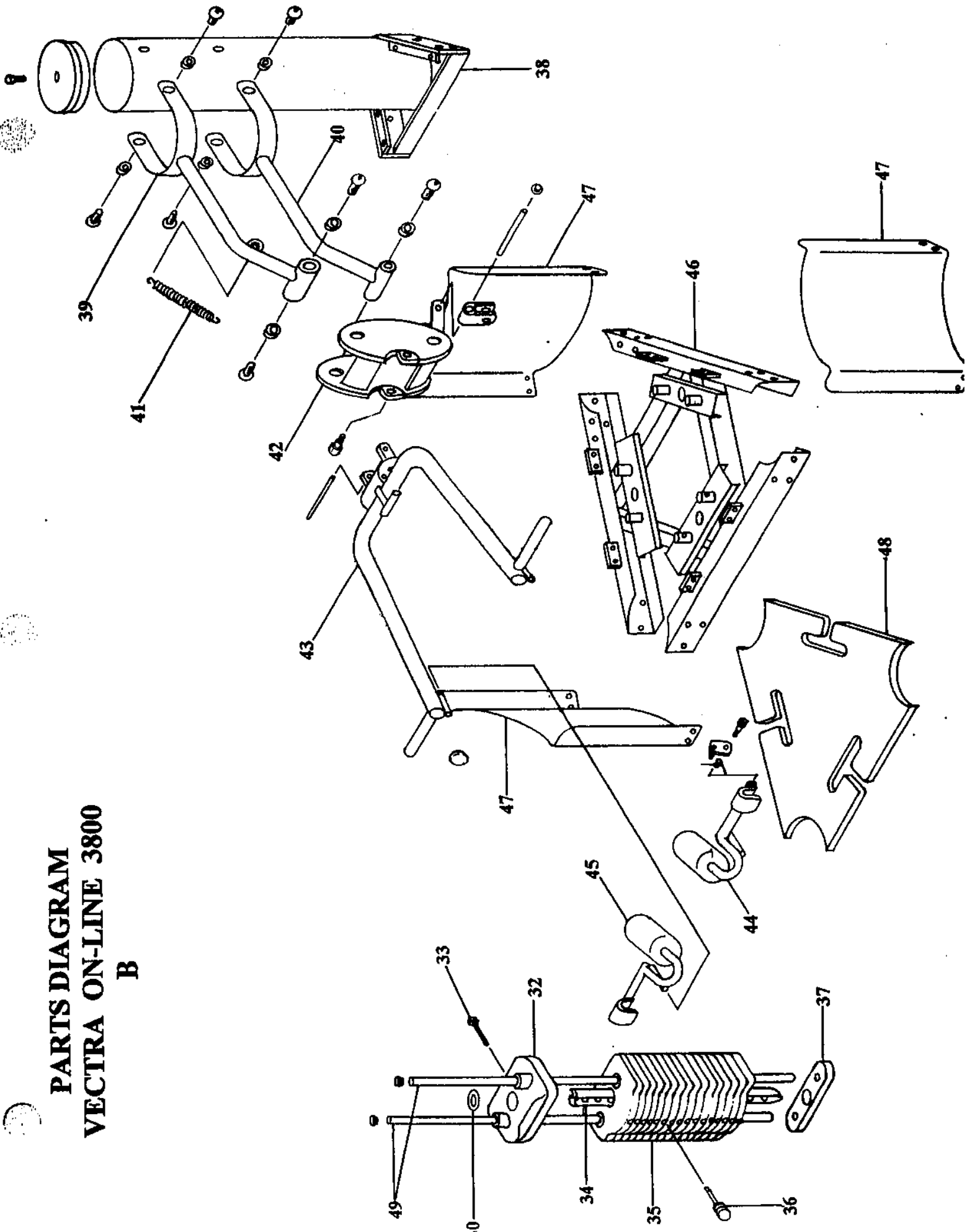


**PARTS DIAGRAM**  
**VECTRA ON-LINE 3800**

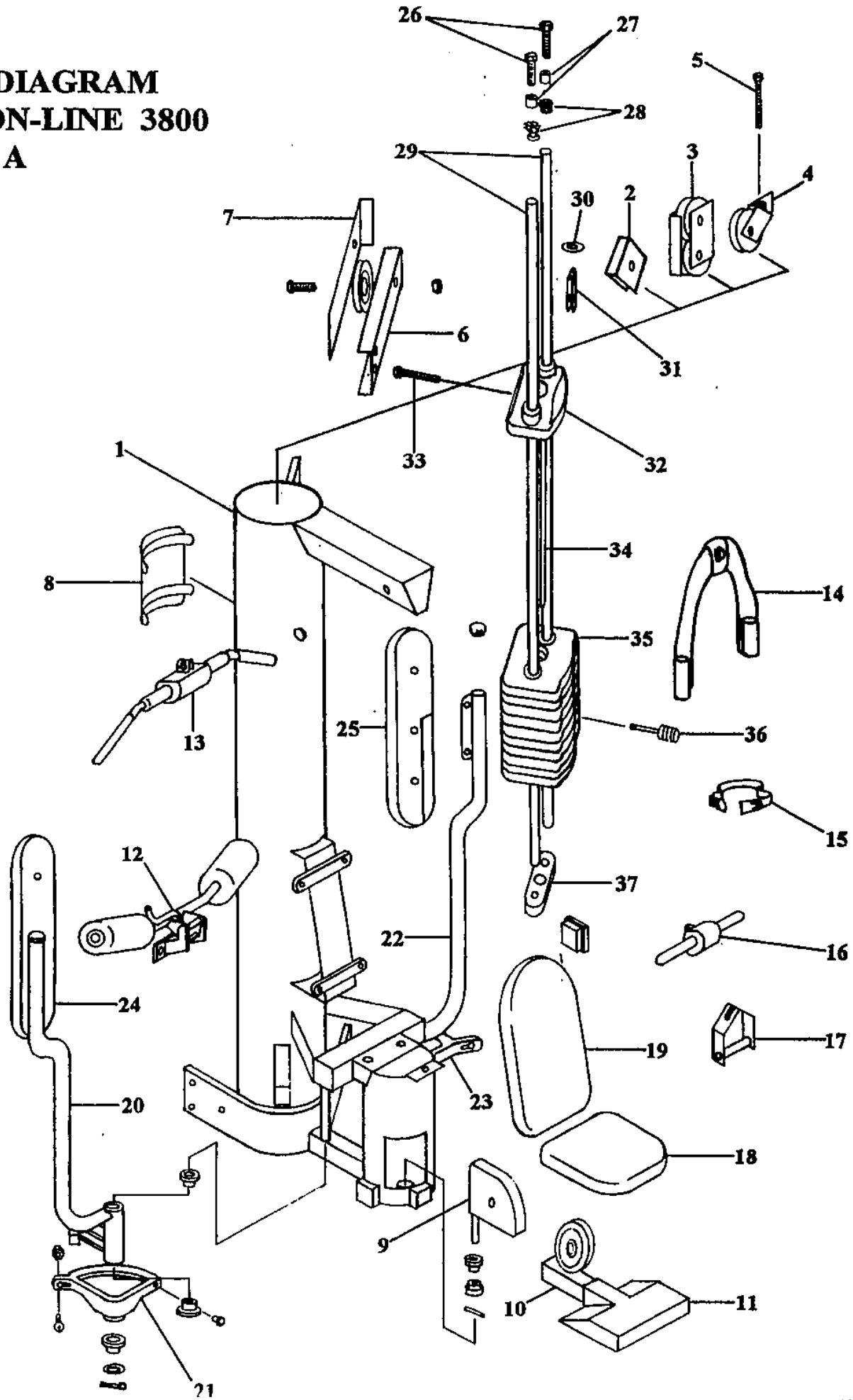
**PARTS DIAGRAM  
VECTRA ON-LINE 3800**

**B**



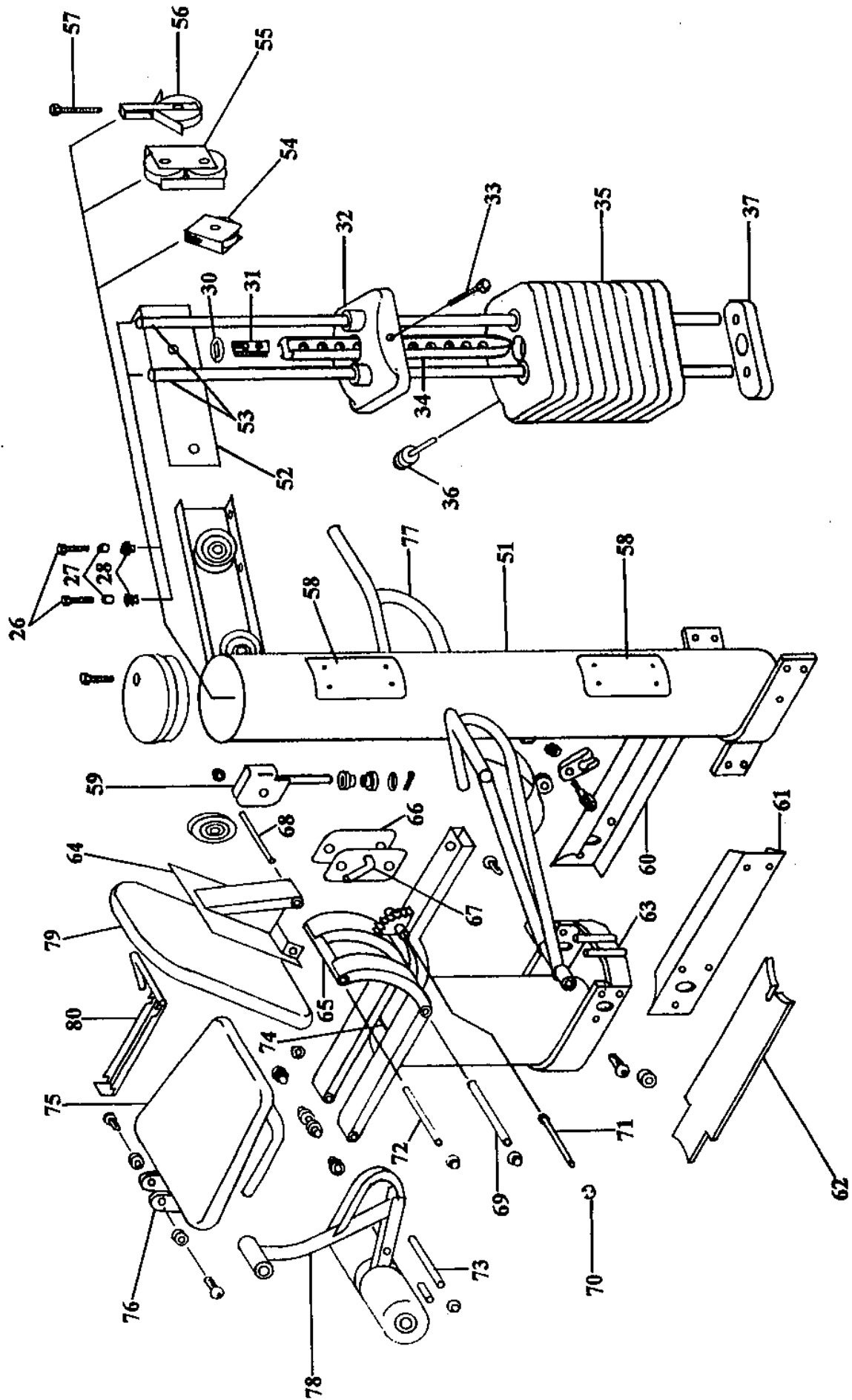
# PARTS DIAGRAM VECTRA ON-LINE 3800

A



**PARTS DIAGRAM  
VECTRA ON-LINE 3800**

**C**



# PARTS LIST

## VECTRA ON-LINE 3800

ITEM	PART#	DESCRIPTION	QTY	ITEM	PART#	DESCRIPTION	QTY
1	22150	Main Column Assembly	1				
	21540	Main Column Weldment	1	27520	O-Ring 3/4 ID	1	
	10580	Pulley 4.5" Dia.	7	15	13280 Leg Strap Assembly	1	
	10600	Locking Nut 3/8-16 Hex	2		27520 O-Ring 3/4 ID	1	
	12760	Screw 3/8-16 x 1.75	9	16	14320 Curl Bar Assembly	1	
	12620	Machine Bushing 7/8 x 1/2	1		12800 Curl Bar Weldment	1	
	13090	Tube Closure 2 x 2	2	11760	Foam Grip 7/8 ID x 8"	2	
	22030	Screw 1/2-13 x 6 Hex Pull Thread	1	23330	Attachment Bar Pad	2	
	23300	Screw 3/8-16 x 1.25 Hex	1	22110	Spring Loaded Plunger	1	
	38900	Plug, 1" Black Hole	1	17	14360 D-Handle Assembly	1	
2	14190	Single Moving Pulley Assembly	1		14340 D-Handle, Formed	1	
	13570	Single Moving Pulley Weldment	1		14330 D-Handle Grip	1	
	10580	Pulley 4.5 " Dia.	1		14350 D-Handle Tube	1	
	10600	Locking Nut 3/8-16 Hex	1	15800	Spacer .605 OD x .25 ID x .375	2	
	12760	Screw 3/8-16 x 1.75 Hex	1	15810	Tube Connector 1/4-20 x 3/4	2	
	27990	Christmas Tree Clip	1	15890	Screw 1/4-20 x 1.25	2	
3	14180	Double Moving Pulley Assembly	1	15910	Finishing Washer, 1/4" Black Nylon	2	
	20000	Double Moving Pulley Bracket	2	18	43240 Butterfly Seat Bottom	1	
	10580	Pulley 4.5 " Dia.	2	19	29280 Butterfly Seat Back	1	
	10600	Locking Nut 3/8-16 Hex	2	20	43040 Right Butterfly Arm Assembly	1	
	12760	Screw 3/8-16 x 1.75 Hex	2		42750 Right Butterfly Arm Weldment	1	
4	21770	Adjustable Pulley Weldment	1		11450 Bronze Bushing	2	
	10580	Pulley 4.5 " Dia.	1	42810	Tube Closure 1.75 " External Dia.	1	
	10600	Locking Nut 3/8-16 Hex	1	28151	Plated Pawl, Butterfly Arm	1	
	12760	Screw 3/8-16 x 1.75 Hex	1	28200	Spring, Butterfly Arm Pawl	1	
5	22030	Screw 1/2-13 x 6" Hex Pull Thread	1	27910	Roll Pin 5/32D x 7/8L	1	
6	21230	Upper Stack Assembly	1	28930	Dowel Pin .25 x 1 "	1	
	21950	Upper Stack Member Weldment	1	21	43060 Right Butterfly Cam Assembly	1	
	10580	Pulley 4.5 " Dia.	1		42980 Right Butterfly Cam Weldment	1	
	10600	Locking Nut 3/8-16 Hex	1	11450	Bronze Bushing	1	
	12760	Screw 3/8-16 x 1.75 Hex	1	13740	Locking Nut 1/4-20 Hex	1	
7	21520	Upper Stack Member Cover	1	14500	Screw 1/4-20 x .5 Flp	1	
8	26180	Access Door Assembly	2	28990	Bumper, Butterfly Cam	1	
9	29040	6 " Low Pulley Weldment	1	22	43050 Left Butterfly Arm Assembly	1	
	25220	Pulley 6 " Dia.	1		42700 Left Butterfly Arm Weldment	1	
	24160	Pulley Pivot Bushing	2	11450	Bronze Bushing	2	
	27910	Roll Pin 5/32D x 7/8L	1	42810	Tube Closure 1.75" External Dia.	1	
10	25890	Calf Extension Tube Weldment	1	28151	Plated Pawl, Butterfly Arm	1	
11	25950	Calf Block Assembly	1	28200	Spring, Butterfly Arm Pawl	1	
	25780	Calf Block Weldment	1	27910	Roll Pin 5/32D x 7/8L	1	
	25720	Calf Block Tread	1	28930	Dowel Pin .25 x 1 "	1	
	15010	Screw 3/8-16 x 2.75 Hex	1	23	43070 Left Butterfly Cam Assembly	1	
12	41800	Adj. Lat Hold Down Assembly	1		42990 Left Butterfly Cam Weldment	1	
	41850	Adj. Lat Hold Down Weldment	1	11450	Bronze Bushing	1	
	41880	L.H.D. Release Pawl/Lever	1	13740	Locking Nut 1/4-20 Hex	1	
	41830	L.H.D. Latch Bar	1	14500	Screw 1/4-20 x .5 Flp	1	
	10340	Foam Roller 4 x 7 x .75 Hole	2	28990	Bumper, Butterfly Cam	1	
	29600	Roller Pad Retainer Washer	2	24	43080 Right B'fly Arm Pad Assembly	1	
	13110	Tube Closure 1" Dia.	2		16470 Right B'fly Arm Pad	1	
	18330	Tube Closure 1/2 x 1 1/2 Blue	1	43100	Right Arm Pad Backing	1	
	17930	Spring Pin .25 x 2.75	1	15890	Screw 1/4-20 x 1.25	3	
	21920	Screw 1/4-20 x 1.25 Hex	2	15910	Finishing Washer, 1/4 Black Nylon	3	
	27900	Extension Spring 1.25L x .5D	1	25	43090 Left B'fly Arm Pad Assembly	1	
13	14770	Lat Bar Assembly	1		16470 Left B'fly Arm Pad	1	
	11750	Lat Bar Weldment	1	43110	Left Arm Pad Backing	1	
	11760	Foam Grip 7/8 ID x 8"	2	15890	Screw 1/4-20 x 1.25	3	
	13240	Foam Grip 7/8 ID x 4"	2	15910	Finishing Washer, 1/4 Black Nylon	3	
	23330	Attachment Bar Pad	2	26	17080 Screw 5/16-18 x 1.5 Hex	2	
	22110	Spring Loaded Plunger	1	27	16520 Spacer .810 OD x .520 ID x .5	2	
14	13270	Crunch Strap Assembly	1	28	11340 Tube Connector 5/16-18 x 1"	2	
				29	21960 Guide Rod 74.74"	2	

ITEM	PART#	DESCRIPTION	QTY	ITEM	PART#	DESCRIPTION	QTY
30	26130	Top Plate Washer	1		22040	Tube Closure 1" Dia.	2
31	20660	Top Plate Cable Retainer	1	50	26140	Top Plate Washer, Press Station	1
32	26100	Top Plate Assembly	1	51	22160	Row/AB Column Assembly	1
	26070	Top Plate	1 ea.		21220	Row/AB Column Weldment	1
	20620	Weight Plate Bushing	4 ea.		10580	Pulley 4.5" Dia.	6
33	29190	Screw 3/8-16 x 3 Hex	1		10600	Locking Nut 3/8-16 Hex	7
34	20630	Selector Shaft	1		11410	Screw 3/8-16 x .75 Hex	1
35	17021	10 LB Vectra Weight Plate	20 ea.		12620	Machine Bushing 7/8 x 1/2	1
	29100	10 LB Weight Plate	1 ea.		12760	Screw 3/8-16 x 1.75 Hex	7
	20620	Weight Plate Bushing	2 ea.	52	21510	Upper Stack Member Cover	1
36	20760	Selector Pin Assembly	1	53	21970	Guide Rod 55.80"	2
37	20750	Weight Stack Bumper	1	54	14190	Single Moving Pulley Assembly	1
38	21590	Press Column Assembly	1		13570	Single Moving Pulley Weldment	1
	21180	Press Column Weldment	1		10580	Pulley 4.5" Dia.	1
	21090	Press Column Cap	1		10600	Locking Nut 3/8-16 Hex	1
	22100	Screw 3/8-16 x .5 Hex	1		12760	Screw 3/8-16 x 1.75 Hex	1
39	43180	Upper Press Lever Assembly	1		27990	Christmas Tree Clip	1
	42010	Upper Press Lever Weldment	1	55	14180	Double Moving Pulley Assembly	1
	11920	Freeway Bearing	2		20000	Double Moving Pulley Bracket	2
40	43190	Lower Press Lever Assembly	1		10580	Pulley 4.5" Dia.	2
	41990	Lower Press Lever Weldment	1		10600	Locking Nut 3/8-16 Hex	2
	11920	Freeway Bearing	2		12760	Screw 3/8-16 x 1.75 Hex	2
41	22960	Extension Spring 8.4" x 1 Dia.	1	56	14200	Adjustable Pulley Assembly	1
42	43260	Press Housing Assembly	1		11600	Adjustable Pulley Weldment	1
	42030	Press Housing Assembly	1		10580	Pulley 4.5" Dia.	1
	11920	Freeway Bearing	4		10600	Locking Nut 3/8-16 Hex	1
	22270	Stack Attachment Weldment	1		12760	Screw 3/8-16 x 1.75 Hex	1
	22200	Pin, Stack/Press	1	57	14210	Screw 3/8-16 x 4" Hex Full Thread	1
	17750	Shaft Retainer .5 Dia.	2	58	26180	Access Door Assembly	2
	40220	Shoulder Screw 1/2D x 3/8-16	2	59	39590	AB Pulley Assembly	1
43	43170	Press Arm Assembly	1		39180	AB Pulley Weldment	1
	42020	Press Arm Weldment	1		10580	Pulley 4.5" Dia.	1
	42250	Tube Closure 1.75" Dia.	2		10600	Locking Nut 3/8-16 Hex	1
	11760	Foam Grip 7/8 ID x 8"	2		12760	Screw 3/8-16 x 1.75 Hex	2
	13110	Tube Closure 1" Dia.	2		24160	Pulley Pivot Bushing	2
	17930	Spring Pin .25 x 2.75	1		27910	Roll Pin 5/32D x 7/8L	1
	27900	Extension Spring 1.25 x .5D	1	60	25750	Right Frame Member Weldment	1
	39660	Plain Roll Pin .25 x 4	1	61	21320	Left Frame Member	1
	39350	Press Latch Pin Weldment	1	62	42860	Row/Leg Floor Piece	1
	41980	Press Latch Weldment	1	63	43140	Leg/AB Station Assembly	1
	43640	Plated Press Latch Pin	1		42600	Leg/AB/Row Column Weldment	1
44	41440	Right Squat Attachment Assembly	1		10580	Pulley 4.5" Dia.	1
	41420	Right Squat Attachment Weldment	1		10600	Locking Nut 3/8-16 Hex	1
	10340	Foam Roller 4 x 7 x .75 Hole	1		12760	Screw 3/8-16 x 1.75 Hex	2
	29600	Roller Pad Retainer Washer	1		11920	Freeway Bearing	2
	13110	Tube Closure 1" Dia.	1		17750	Shaft Retainer .5 Dia.	8
	41530	Squat Attachment Latch	1		18330	Tube Closure 1/2 x 1 1/2 Blue	1
	41550	Right Squat Torsion Spring	1		24160	Pulley Pivot Bushing	12
	41540	Spring Pin .25 x .75	1		27900	Extension Spring 1.25L x .5D	1
	27330	Shoulder Screw 5/16D x 1/4-20	1		27910	Roll Pin 5/32 x 7/8	1
	41470	Label, Right Squat	1	64	42400	Row Seat Back Pivot Weldment	1
45	41430	Left Squat Attachment Assembly	1	65	42450	Row Seat Lever Weldment	1
	41410	Left Squat Attachment Weldment	1	66	42800	Row Seat Lever/Cover Weldment	1
	10340	Foam Roller 4 x 7 x .75 Hole	1		42850	Row Seat Pawl Latch Weldment	1
	29600	Roller Pad Retainer Washer	1	67	42540	Formed Row Seat Latch Bar	1
	13110	Tube Closure 1" Dia.	1	68	38770	Bench Leg Stop Bar	1
	41530	Squat Attachment Latch	1	69	42560	Row/Leg Seat Pivot Pin Bar	1
	41550	Left Squat Torsion Spring	1	70	43470	E-Ring .5 External Dia.	1
	41540	Spring Pin .25 x .75	1	71	43480	Seat Pivot Clevis Pin .5 Dia.	1
	27330	Shoulder Screw 5/16D x 1/4-20	1	72	43570	Row Seat Back Pivot Pin Bar	1
	41470	Label, Left Squat	1	73	43580	Leg Developer/Seat Pivot Pin Bar	1
46	21480	Main Frame Assembly	1	74	43160	Leg Seat Lock Trim Strip	1
	21920	Screw 1/4-20 x 1.25 Hex	2	75	43210	Leg/AB Seat Bottom Upholstery	1
47	21880	Weight Stack Guard	3	76	43220	Leg/AB Seat Bottom Assembly	1
	22050	Trim Strip, Black Extruded	1		42550	Leg Seat Bottom Weldment	1
48	21110	Triangular Floor Piece	1		11760	Foam Grip 7/8 ID x 8"	2
49	21980	Press Guide Rod 55.80"	2		11920	Freeway Bearing	2

ITEM	PART#	DESCRIPTION	QTY
	13790	Screw 1/2-13 x 1 Button Head Black	2
77	21250	Row Arm Assembly	1
	21440	Row Arm Weldment	1
	21470	Foam Grip 7/8 ID x 8"	2
	20890	Foam Grip 7/8 ID x 9"	2
	13740	Locking Nut 1/4-20 Hex	1
	27330	Shoulder Screw 5/16D x 1/4-20	1
	27360	Christmas Tree Clip	1
	27360	Cable Retainer Bracket	1
78	22970	Adj. Leg Developer Assembly	1
	22920	Adj. Leg Developer Weldment	1
	10340	Foam Roller 4 x 7 x .75 Hole	2
	29600	Roller Pad Retainer Washer	2
	13110	Tube Closure 1" Dia.	2
	13740	Locking Nut 1/4-20 Hex	1
	14500	Screw 1/4-20 x .5 Ptp	1
	22910	Bumper, Leg Machine	1
	23090	Spring Pin .313 x 2.25	1
79	21410	Row/AB Seat Back	1
80	42500	Leg Seat Lock Strut Weldment	1
	18330	Tube Closure 1/2 x 1 1/2 Blue	1
81	21930	Cable Assy. High Pulley/Stack	1
82	42640	Cable Assy. Low Pulley/M. Col.	1
83	20910	Cable Assy. AB Stack	1
84	20920	Cable Assy. Leg Column	1
85	40980	Cable Assy. Row	1
86	28840	Cable Assy. Butterfly	1
87	21330	3800 Hardware Kit	1
	11410	Screw 3/8-16 x .75 Hex	31
	12340	Cotter Pin 3/16 x 1.5	2
	12760	Screw 3/8-16 x 1.75 Hex	1
	13750	Machine Bushing 1/2 x 1	2
	13790	Screw 1/2-13 x 1 Button Head Black	12
	14500	Screw 1/4-20 x .5 Ptp	1
	17750	Shaft Retainer .5 Dia.	1
	20850	Screw 1/4-20 x .75 Hex	11
	22100	Screw 3/8-16 x .5 Hex	14
	22960	Extension Spring 8.4" x 1" Dia.	1
	26140	Press Top Plate Washer	1
	26310	Plated Bar, Leg Mount Pivot	1
	40220	Shoulder Screw 1/2D x 3/8-16	2
	41220	Washer .875 x .39 Black Nylon	1

ITEM	PART#	DESCRIPTION	QTY
	42240	Washer SAE 3/8	4
	43230	Screw 5/16-18 x 3	1
88	42340	Label, Vectra On-Line 3800, Large	2
89	20860	Label, Vectra 8"	1
90	28020	Label, Manufactured By: ...	2
91	28010	Label, Warning: ...	3
92	22230	Label, Weight Plate Numbers	3
93	43130	Instruction Manual, Vectra 3800	1
94	43120	Poster, Vectra 3800	1

Vectra On-Line 3800	
Part #	Part Description
69020	Ab Crunch Strap
55850	Ab Pulley assembly- with pulley & hardware
54790	Ab Pulley Bracket- without pulley & hardware
57900	Access Door (painted)
2.5AO	Add-on plate- 2.5 pound
5.0AO	Add-on plate- 5 pound
14200	Adjustable Pulley assembly- with pulley used in row/ab column (bolt #14210 is separate)
11600	Adjustable Pulley Bracket- no pulley or hardware
21770	Adjustable Pulley weldment (main column)- no pulley/hardware (uses 22030 bolt)
11920	Bearing- freeway for most pivot points, used with #13790 button head bolts
48590	Bench Cam Follower weldment
38770	Bench Leg Stop Bar- used in leg/ab station
48510	Bench Leg Stop/Hold weldment
52680	Bench Main Frame weldment
48550	Bench Seat Bottom weldment
52600	Bench Wheel Mount Tube
52610	Bench Wheel weldment
44970	Bolt- 5/16 Dia. shoulder X 1.5L 1/4-20 for row arm pivot retro kit
21920	Bolt- 1/4-20 X 1.25 hex for lat hold down & press guide rods
48830	Bolt- 1/2D X 3/8 shoulder for original version press handle (1500/3800/4800)
22030	Bolt- 1/2-13 X 6.00 for adjustable pulley main column
13790	Bolt- 1/2-13 X 1 button head for most freeway bearing pivot points
20850	Bolt- 1/4 X 20 X .75 for mounting upholstery
22100	Bolt- 3/8-16 X 1/2 blk- frame <b>OBSELETE</b> (replaced with #55870)
55870	Bolt- 3/8-16 X 1/2 blk hex with flange for frame
11410	Bolt- 3/8-16 X 3/4 blk hex for frame <b>OBSELETE</b> (replaced with #55860)
55860	Bolt- 3/8-16 X 3/4 blk hex with flange for frame
23300	Bolt- 3/8-16 X 1.25 to attach some pulleys (metal on 1 side)
52910	Bolt- 3/8-16 X 1.5 for columns, pulley assemblies (double, single, adj., etc.)
12760	Bolt- 3/8-16 X 1.75 for most pulley assemblies & column caps
29190	Bolt- 3/8-16 X 3 for top plate
14210	Bolt- 3/8-16 X 4 for most adjustable pulleys
27330	Bolt- 5/16 X .625, 1/4-20 shoulder for squat latch & row cable retainer
17080	Bolt- 5/16-18 X 1.5 for guide rod threaded inserts
43230	Bolt- 5/16-18 X 3 SHC for seat lock
52920	Bolt- 5/16-18 X 6.5 to mount standard bench wheels
43400	Box- 3800 inner, boxed items inside box #3
43000	Box- 3800 Large (Box 1)
43150	Box- 3800 Medium (Box 2)
43250	Box- 3800 Press Column (Box 3), includes press column and inner box
20000	Bracket- for double-moving pulley (2 required)
20750	Bumper- bottom of weight stack <b>OBSELETE</b> (replaced with two each #57670)
48680	Bumper- for bench strut
42220	Bumper Tube- for butterfly arm pawl
47590	Bumper- used at row arm rest/down stop
57670	Bumper weight stack ( <b>two required</b> )- replaces single piece 20750
54130	Bumper/Plug-3/4 inch stem for b/fly cam, leg/ab seat & bench
28990	Bumper/Plug- for butterfly cam, leg/ab seat rest (replaced with #54130)
11450	Bushing- bronze for butterfly cams
43780	Bushing- nylon for butterfly arm
24160	Bushing- nylon for pivot pulley and bench
20620	Bushing- weight plate (all) & top plate
43050	Butterfly Arm assembly- left-side for 4800/3800/1850/4850/3850/VX
43040	Butterfly Arm assembly- right-side for 4800/3800/1850/4850/3850/VX
43070	Butterfly Cam assembly- left-side for 1400/1600/1850/4800/3800
43060	Butterfly Cam assembly- right-side



Vectra On-Line 3800	
Part #	Part Description
47930	Cable- 10-inch extension for low pulley
20910	Cable- ab crunch station- 126" long
28840	Cable- butterfly station- 70.84" long
21930	Cable- high pulley- 111.7" long
20920	Cable- leg extension- 116.0" long (12.5" stripped)
42640	Cable- Low pulley- 138.6" long (10' stripped) <b>OBSOLETE</b>
42640-EX	Cable- LP 3800 cable assy KIT
70810	Cable- LP 3800 cable assy
40980	Cable- row station- 28.18" long
43590	Cable Set/Kit- complete
22120	Cable Stop- slotted for leg extension cable (set screw #22280 sold separately)
17160	Cable Tie
25950	Calf Block assembly
25890	Calf Block Extension Tube weldment (obsolete, older versions only)
43480	Clevis Pin/Bar- used as seat back leg/ab adjust pivot (.50 DIA)
15920	Clip- accessory attachment used to anchor cable in row column
CGPB	Close Grip Press Attachment Set- Black- allows close grip exercises on press arms
CGPCP	Close Grip Press Attachment Set- Classic Pewter- for close grip exercises on press arms
CGPSS	Close Grip Press Attachment Set- Sterling Silver- for close grip exercises on press arms
CGPW	Close Grip Press Attachment Set- White- allows close grip exercises on press arms
65570	Close Grip Press Attachment- right-side
65580	Close Grip Press Attachment- left-side
50220	Column Cap- for main column
21080	Column Cap- for row column
21090	Column cap- Press column and dumbbell rack
12340	Cotter Pin- 3/16 X 1.5 inch for butterfly arms/cams (used w/#13750 washer)
21520	Cover Plate- for main column upper stack
21510	Cover Plate- for row/ab upper stack
63540	Curl Bar assembly- (straight) BLACK only
14180	Double Moving Pulley assembly- with pulleys & hardware
43470	E-Ring- 5 Dia Ext. for shafts on leg/ab station
53790	E-Ring/Crescent-Ring- used in press arm assembly & row seat back assy.
21110	Floor Piece/Board- large triangular
42860	Floor Piece/Board- small, for row/leg extension station
10340	Foam Roller
21480	Frame assembly- main triangle
21320	Frame Member- left side 25" leg/ab to row column
25750	Frame Member- right side leg/ab row column weldment
13240	Grip- 4 Inch for inner section of lat bar
47580	Grip- 7.13 inch used on row arm
11760	Grip- 7/8 I.D. X 8 inch- standard- <b>REPLACED</b> with #61890 "SS Cap" version
61890	Grip- 8-inch "SS Cap" version- replaces #11760
21980	Guide Rod- 55.80 inches for press station, includes end cap
55400	Guide Rod- 55.80 inches for row station with tube connector, bolt & spacer
55430	Guide Rod- 74.74 inches, includes tube connector, spacer & bolt
62000	Handle- Single Grip 8-inch strap (replaces D-Handle)
21330	Hardware Kit- 3800
28020	Label- "Manufactured by..."
20860	Label- "Vectra" 8 inch
28010	Label- "Warning..." for wt. guard
48950	Label- "Warning..." for bench
42340	Label- large "On-Line 3800" <b>No longer available</b> - send generic version #45940
43820	Label- left-side squat
43830	Label- right-side squat
60600	Label- wt. stack number sheet standard stacks -REVISED 12/04 <comment>
45940	Label- large Vectra generic- send in place of 42340

Vectra On-Line 3800	
Part #	Part Description
62640	Lat Bar assembly
41800	Lat Hold Down- deluxe version
53930	Latch/Lever- current version for squat attachments (9/00- uses 54010 spring pin)
41530	Latch- Squat Attachment left & right- <b>for original version squats only</b>
48350	Leg Developer assembly with foam rollers OBSOLETE
48330	Leg Developer w/o rollers OBSOLETE
43200	Leg/Ab Seat Bottom assembly- includes seat lock strut and upholstery
43140	Leg/Ab Station assy- complete w/seat adjust **May need 51140** <comment>
43140RET	Leg/Ab Station assy- complete w/seat adjust **May need 51140** VX38 Leg/Ab Mod
42600	Leg/ab station weldment
54050	Leg/Ankle Strap
40210	Loctite 242- 50 ML
29040	Low Pulley Bracket- 6 Inch without pulley
22150	Main Column assembly- 3800
21540	Main Column weldment- 3800
43130	Manual- 3800
10600	Nut - locking 3/8-16 hex for most pulley assemblies
17340	Nut- 1/2-13 hex jam for adjustable pulley
13740	Nut- 1/4-20 for row arm cable retainer pivot & press guide rods
50430	Nut- 5/16-18 hex locking for bench wheel bolt
27520	O-Ring- .75 ID for leg strap and ab strap
27530	O-Ring- 1 ID X 1/8 W neoprene for ORIGINAL selector pins
57570	Padding- center of curl and lat bar, etc. (1 per bar)- replaces 23330
23330	Padding- center of curl and lat bar, etc. <b>Obsolete</b> - replaced with 57570
46000	Panel Fastener Clip/plug- used to secure column caps
28151	Pawl- for butterfly arms
42850	Pawl Latch- for leg/ab column back adjust- uses 27910 spring pin
43640	Pin- press latch <b>OBSOLETE</b> (replaced with 39670)
28930	Pin/Dowel- .25 DIA X 1 for butterfly arm pawl
22200	Pin/Shaft- used in press housing with stack attach
PB??	Pinnacle Bench- complete (?? = color/color, ie BB for Black/Black)
53230	Pinnacle Bench without upholstery
46830	Pivot Bar- used on Pinnacle Bench
27990	Plug (Christmas tree)- black plastic for cable retainer openings
43120	Poster- 3800 <b>Out of Stock</b> Suggested replacement is 3850 poster- #56880
43170	Press Arm/Handle assembly
21590	Press Column assembly- with column cap
21180	Press Column weldment- painted weldment only, no column cap
43260	Press Housing/Adjust assembly
39350	Press Latch Pin weldment- "H" shaped piece- shaft goes into this
41980	Press Latch weldment- this is the grip/handle used to make adjustment
43190	Press Pivot Arm- lower 3800
43180	Press Pivot Arm- upper 3800
10580	Pulley- 4.5-inch
25220	Pulley- 6 inch
41880	Release Pawl/Lever- for adjustable lat hold down
20660	Retainer- for cable on leg developer and top of weight stack
46920	Retainer- for row arm cable
48340	Roll Pin- 5/16D X 1.25 for standard & current version leg developer
27910	Roll Pin- 5/32D X 7/8L for swivel pulleys, butterfly arm pawls, row back pawl, etc.
39660	Roll Pin- for 1800/3800/4800 press handle
21250	Row Arm assembly
42400	Row Seat Back weldment- <b>OBSOLETE</b> (replaced with #51100)
42540	Row Seat Latch Bar/Lever (formed) <b>#67</b>
42450	Row Seat Lever
42800	Row Seat Lever/Cover weldment <b>TWO Versions</b> - see drawing (flared hole) <b>#66</b>

Vectra On-Line 3800	
Part #	Part Description
22160	Row/Ab Column assembly
21220	Row/Ab Column weldment
25720	Safety Tread- for row/calf block- Needs to be custom made w/current material
15890	Screw- 1/4-20 X 1.25 OPH for b/fly arm pads & D-handle
22280	Screw- 1/4-20 X .25 set screw for slotted cable stop
51100	Seat Back weldment- leg/ab station REVISION, replaces #42400
48360	Seat Bottom Leg/Ab assembly- without upholstery & latch
42500	Seat Lock Strut/Latch assembly
20760	Selector Pin- ORIGINAL Vectra Precision plates <b>ONLY OUT OF STOCK</b>
53600	Selector Pin- short (4-3/8 in shaft) ORIGINAL Vectra Precision 10 LBS plates ONLY
20630	Selector Shaft- standard for 210 and 260 pound weight stacks (20 hole)
18110	Shaft- .05 DIA used on bench
43570	Shaft- .5 DIA X 8 for row station upper back pivot
43580	Shaft- .5 DIA X 8.5 for leg developer/seat pivot (seat pivots on this)
48650	Shaft- for bench main pivot
42560	Shaft- for row/leg seat <b>back</b> pivot
48620	Shaft- for zinc/carb bench cam follower
17750	Shaft Retainer- .5 shaft (large) for most shafts
39670	Shaft/Pin- for press latch (replaces 43640)
60510	Single Moving Pulley assembly- with pulley & hardware
60500	Single Moving Pulley bracket- no pulley & hardware
15800	Spacer- .615 X .25 X .375L nylon for D-handle
16520	Spacer- .81 X .52 X .5 nylon for guide rods
52530	Spring- .42OD X 1.25" long for bench wheel assembly (2 required)
53990	Spring- both sides current version squat attachment latches (9/00)
28200	Spring- butterfly arm pawl
27900	Spring- extension 1.25FL for lat hold down, press handle & seat adjust
22960	Spring- extension 8.4 x 1" dia. for press station weight reduction
17930	Spring Pin- .25 X 2.75 for lat/leg hold down & press handle
54010	Spring Pin- 5/32 X 1-1/4 for current version squat latch (9/00)
41540	Spring Pin- used on original version squat latch
50680	Spring- squat latch ORIGINAL versin LEFT-side (modified)
50690	Spring- squat latch ORIGINAL version RIGHT-side
41430	Squat Attachment- left-side
41440	Squat Attachment- right-side
22270	Stack Attach- press station 3800/4800, connects top plate with shaft, etc.
48700	Strut- bench back weldment
48410	Tape- for calf block safety tread (takes 5.6 ft.)
28040	Tie- 4 inch plastic
26100	Top Plate (original)- weight stack
49090	Touch-Up Paint- Black bottle
20800	Touch-Up Paint- Black can
49100	Touch-Up Paint- Silver bottle
15520	Touch-Up Paint- Silver can
49080	Touch-Up Paint- White bottle
20790	Touch-Up Paint- White can
43030	Trim Strip- for ab pulley
22050	Trim Strip- for weight guard (71" per guard-generic#- not for specific location)
43160	Trim Strip- used at leg seat lock
18330	Tube Closure/End Cap- 1/2 X 1 1/2 BLUE for adjustment levers
22040	Tube Closure/End Cap- 1 inch DIA X 16GA for press station guide rods
53940	Tube Closure/End Cap- 1 inch round for current version squats (9/00)
38900	Tube Closure/End Cap- 1 inch round plug for main column & original bench
15780	Tube Closure/End Cap- 1 X 2 X 10-14GA used on Pinnacle Bench
13110	Tube Closure/End Cap- 1" DIA X 14GA use on press adjust
39080	Tube Closure/End Cap- 1.5 X 3 used on original Pinnacle Bench

Vectra On-Line 3800	
Part #	Part Description
42250	Tube Closure/End Cap- 1.75 inch for end of press handle
60470	Tube Closure/End Cap- 1.75 inch round external for butterfly arms
13100	Tube Closure/End Cap- 1½ X 14 GA for bench
52330	Tube Closure/End Cap- 2 X 2 ribbed external PVC for current bench
13090	Tube Closure/End Cap- 2 X 2 X 14 GA for main columns at butterfly station
46990	Tube Closure/End Cap- 3/8 X 7/8 BLUE tube for Pinnacle Bench
51330	Tube Closure/End Cap- round single piece closure/retainer for foam rollers
15810	Tube Connector- 1/4-20 X 3/4 threaded insert for D-handle
11340	Tube Connector- 5/16-18 X 1" threaded insert for guide rods
43110	Upholstery- butterfly arm pad BACKING BOARD ONLY- <b>left side</b>
43100	Upholstery- butterfly arm pad BACKING BOARD ONLY- <b>right side</b>
43090	Upholstery- butterfly station arm pad- <b>left side</b>
43080	Upholstery- butterfly station arm pad- <b>right side</b>
29230	Upholstery- seat back bench
59200	Upholstery- seat back butterfly station
51140	Upholstery- seat back leg/ab station- <b>last version</b> for after 7/1/98
51090	Upholstery- seat back leg/ab station- <b>retro version</b> for prior to 7/1/98
39090	Upholstery- seat bottom bench
43240	Upholstery- seat bottom butterfly station
43210	Upholstery- seat bottom leg/ab station
51250	Upholstery Set- Pinnacle Bench complete
51230	Upholstery Set/Kit- complete (with 6/1/98 revision #51140)
43270	Upholstery Set/Kit- complete <b>retrofit</b> (with #51090 for pre-6/1/98)
21230	Upper Stack Support assembly- with pulley & hardware
21950	Upper Stack Support- without pulley & hardware
41220	Washer- .875 X .39 X .093 black nylon for small floor piece
49310	Washer- 1.62 X 1.14 X .065 for 4800 pivots & leg press foot plate bearings
42240	Washer- 3/8 blk SAE flat, for some old-style frame bolts <b>OBSOLETE</b>
12620	Washer- 7/8-16 X ½ X 14GA
15910	Washer- finishing for D-handle and butterfly arm pads
26130	Washer- neoprene bumper for top plate- standard
26140	Washer- neoprene, top plate at press station ONLY
29600	Washer- retainer for foam rollers <b>OBSOLETE</b> (replaced with #51330)
13750	Washer/Bushing- 1.5 X 1 X 14 for b/fly arms/cams (uset w/#12340 cotter)
47090	Weight Plate- box of five original 10 pound plates
17021	Weight Plate- original 10 pound
17191	Weight Plate- original 15 pound