

VECTRA[®]

FITNESS



BRT

Owner's Manual

Introduction

We at Vectra Fitness appreciate your selection of our product for your fitness program, and invite your questions and comments. We're sure that you'll be pleased with your new Vectra Fitness gym. This owner's manual provides you with safety rules, assembly instructions and routine inspection and maintenance information to enable you to get the most from your gym. Please read through this manual carefully before you assemble and use your Vectra Fitness gym.

Routine Inspection & Maintenance

Vectra Fitness gyms are designed to provide years of trouble-free service with minimal routine maintenance. You can be confident of continued top quality performance by carrying out the following periodic inspection.

PERFORM THE FOLLOWING SAFETY CHECK DAILY:

1. Inspect cables, cable ends and nylon jacket very carefully. Refer to Warning Label for specific information on inspecting cables. This same information is repeated in this manual and on your exercise chart.

Replace any damaged or worn cables. Annual cable replacement (semiannual in multi-user settings) is strongly recommended as an additional precaution. The rate at which cables wear depends on many factors including: repetitions, weight setting, misuse, abuse, etc. Because of this, periodic cable replacement is not a sufficient safeguard against unexpected breakage. Nothing short of a thorough, careful daily inspection constitutes an adequate safety program.

PERFORM THE FOLLOWING CHECKS WEEKLY:

1. Inspect frame and mounting bolts for tightness. Tighten if necessary.*

2. Inspect cable attachments (short and long single handles, multi-purpose bar, ankle strap, foot strap, etc.) carefully. Look for damaged mounting eyes, springs, latches, buckles, etc. Inspect the webbing for fraying and check that the stitching is intact and strong. Inspect all joints, fixed and pivoting. Make sure any bolts are tight and that all retaining rings are intact and in good condition. Inspect any bearings. Replace any damaged or worn items.

3. Inspect arm adjustment levers for proper function. Ensure that latch pins are engaging all positions fully. Replace improperly functioning parts with Vectra replacement parts only.

4. Inspect arm mounting screws and clevis pins (horizontal and vertical axes) for tightness. Tighten if necessary.*

5. Inspect all springs, including arm latching springs to make sure they are in good condition and working properly. Replace any missing, damaged or worn springs with Vectra replacement parts only.

6. Inspect all molded parts such as levers, nylon bushings and cable anchors. Make sure all are intact, undamaged and secure. Replace any parts that are missing, worn or damaged.

7. Inspect cable retaining plugs and spring plungers. Replace if needed using Vectra replacement parts only.

8. Inspect arm pivots, retainers, bushings, attachment points, and rotation limiters. Remedy any problems found using Vectra replacement parts only.

9. Inspect non-slip tread on foot grip bar and swiveling stirrups. Remedy any problems found using Vectra replacement parts only.

10. Adjust arm position adjust cable system length if necessary (see assembly instructions for details).

PERFORM THE FOLLOWING CHECKS MONTHLY:

1. Inspect all hand grips, pads, etc. Replace any damaged, worn, loose or missing parts.

2. Apply grease to the following locations: at arm up/down and left/right pivots and spring mount ends.

3. If unit is in a humid area, such as near a pool, hot tub or sauna, or in certain climates, use of an auto wax should delay rusting.

* If any bolts seem to loosen periodically, use Loctite 242 for a long-term cure.

Safety Rules

! WARNING

The risk that you assume by using this type of equipment can be reduced by obeying a few simple rules:

1. Consult your physician before beginning your exercise program.

2. Do not allow young children to use or play with, around or on this equipment. Allow older children to use only with adult supervision.

3. Inspect machine for loose, worn or defective parts daily. Access covers are provided, where necessary to inspect internal areas. Inspect all latching mechanisms, attachment points, extension cables, and attachments as well to ensure that they are in safe working condition. Pay particular attention to ball fittings, attachment eyes, springs, pivots, webbing, and stitching. Do not use or allow this machine to be used until all deficiencies found have been repaired or replaced. Use only Vectra supplied replacement parts. Ensure that machine is fully and correctly assembled prior to use.

4. Ensure that adjustments are securely engaged and locked in position before using. An improperly engaged arm, for example, could move when force is applied resulting in injury. Support weight of arm and keep fingers etc. clear of moving parts while making adjustments.

5. Exercise in front of machine only. Any pulling, loading or pushing of arms or attachments from sides or back of machine could cause machine to tip or move resulting in serious injury. Exercising at excessive angles from front of machine could also be unsafe depending on body weight and other factors. Test before committing full body weight and decrease angle if any movement is noted. Exercise using slow, steady motions only. Any swinging or quick, violent movements, or errors in exercise form could cause the machine to tip or move as well. Consult exercise chart for prescribed exercises. This machine is not a piece of gymnastic equipment. Gymnastic maneuvers and routines are not to be performed on this product as they could cause it to tip or move resulting in serious injury. Don't be careless or play on equipment. Stay alert.

6. Serious injury could result if machine moves in use. To prevent this ensure that floor is even, strong, and not slippery. If equipment slides on floor, place it on rubber matting.

7. Read and follow all instructions in owner's manual, exercise chart and product labels. Replace any labels if damaged, illegible or removed. Additional copies are available from Vectra Fitness, Inc. or your dealer. Do not use this machine until you have taken the time to become completely familiar with its safe operation.

Assembly Instructions

Tools Required

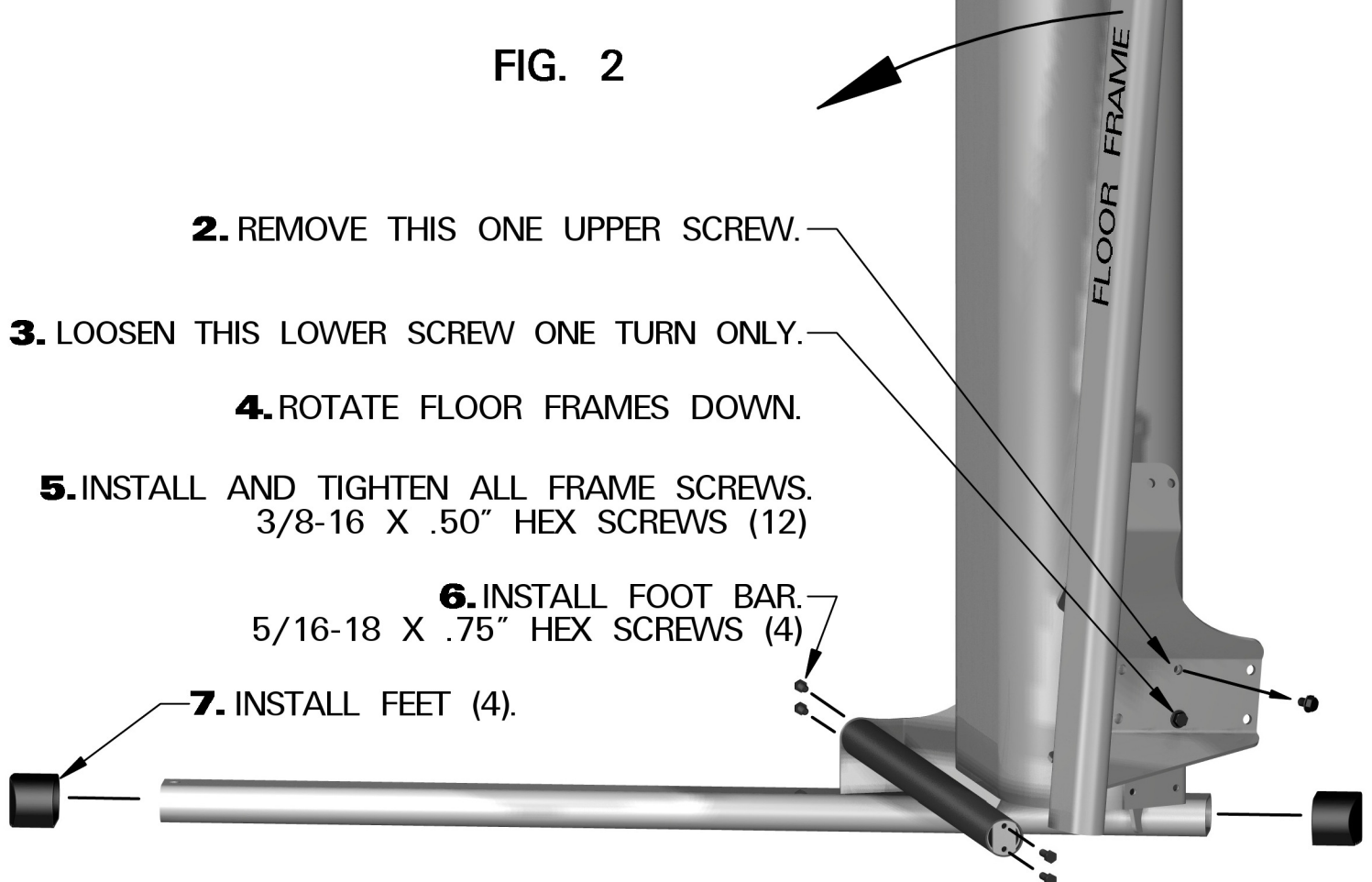
Wrenches: One each (1/2", 9/16")
Phillips screwdriver



FIG. 1

1. PUSH OFF "C" RING.
REMOVE LEFT AND RIGHT
ADJUSTABLE ARMS

FIG. 2



2. REMOVE THIS ONE UPPER SCREW.

3. LOOSEN THIS LOWER SCREW ONE TURN ONLY.

4. ROTATE FLOOR FRAMES DOWN.

5. INSTALL AND TIGHTEN ALL FRAME SCREWS.
3/8-16 X .50" HEX SCREWS (12)

6. INSTALL FOOT BAR.
5/16-18 X .75" HEX SCREWS (4)

7. INSTALL FEET (4).

FIG. 5

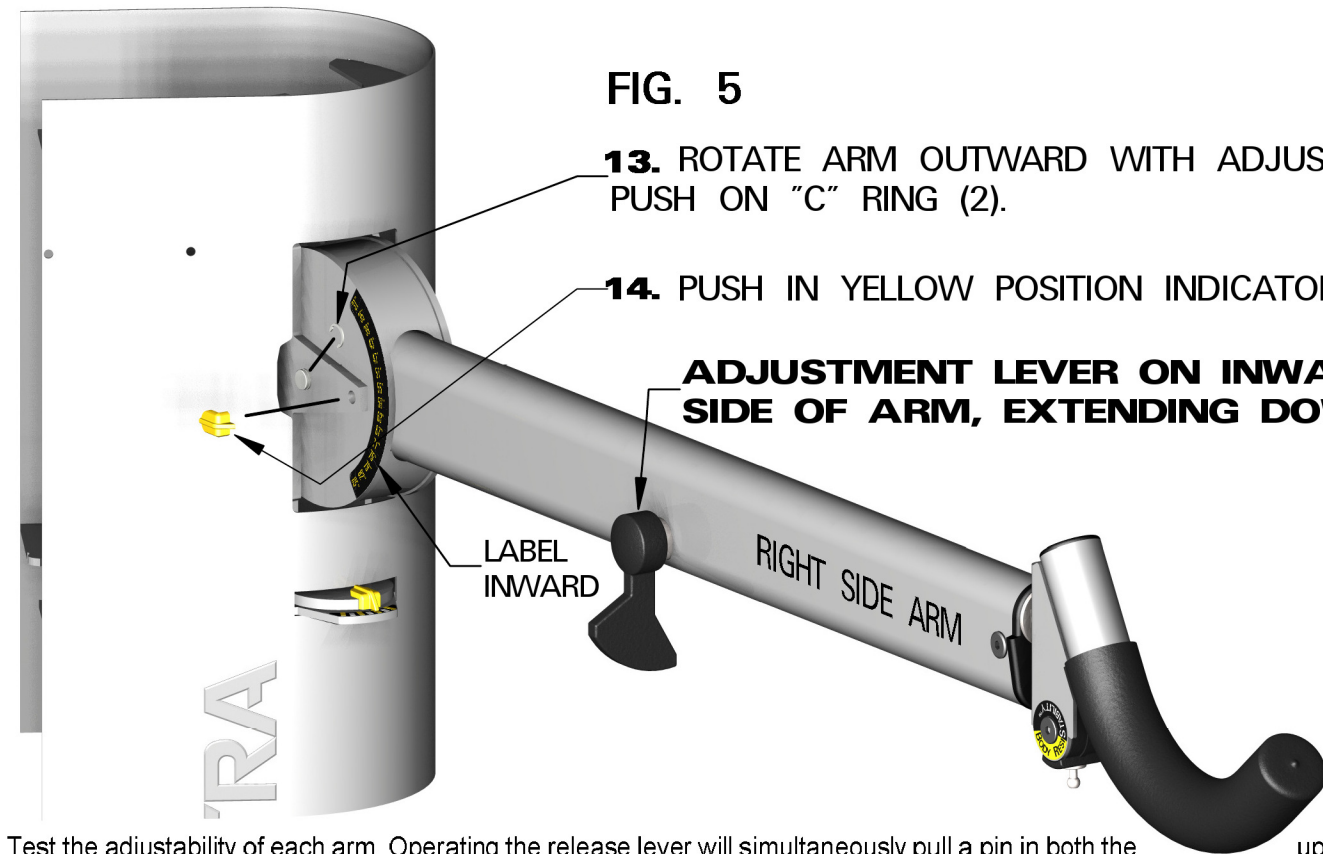
13. ROTATE ARM OUTWARD WITH ADJUST LEVER. PUSH ON "C" RING (2).

14. PUSH IN YELLOW POSITION INDICATOR (2).

ADJUSTMENT LEVER ON INWARD SIDE OF ARM, EXTENDING DOWN.

LABEL
INWARD

RIGHT SIDE ARM



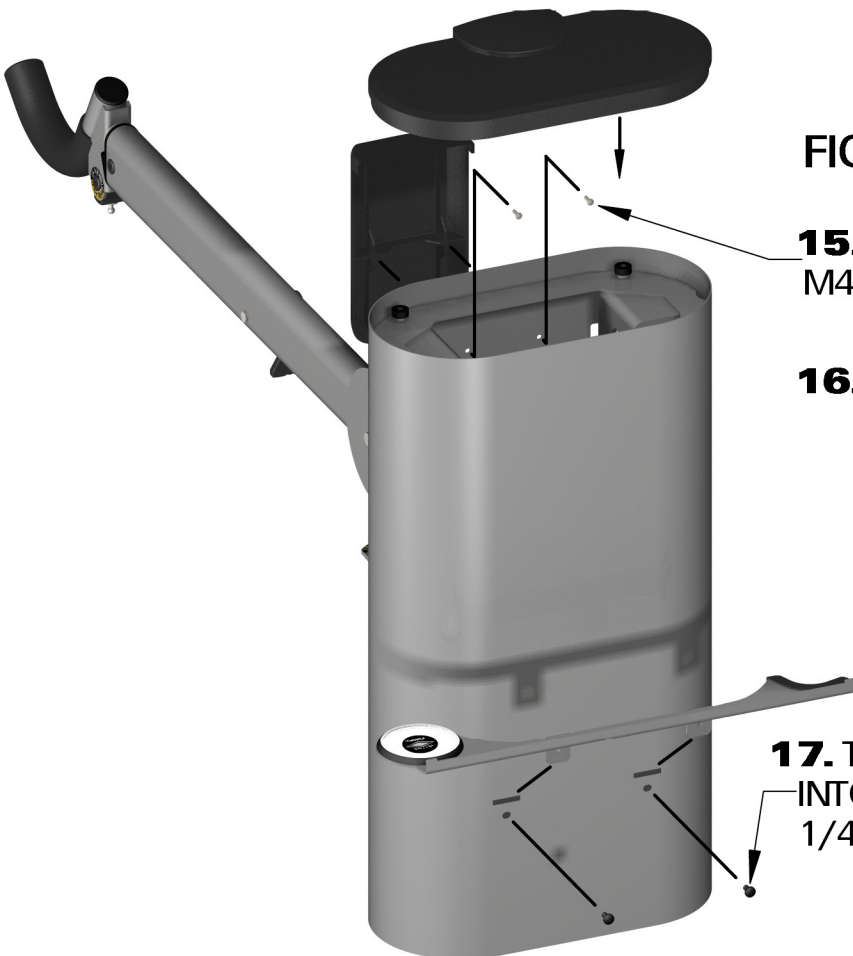
Test the adjustability of each arm. Operating the release lever will simultaneously pull a pin in both the up/down and right/left adjust areas. Check that each arm is free to move both horizontally and vertically. Let go of the lever and make sure that each arm locks in both the horizontal and vertical direction. This area was fully assembled, adjusted and tested at the factory. If the pin does not disengage, latch fully, or if any "clicking" is heard when adjusting either arm, first verify that all associated parts were assembled per the above steps 8, 11, and 12. If needed, the arm adjustment can be adjusted. To do so, release the **jam nut** (see FIG. 3 and 4) with a 3/8" wrench and pliers or 7/32" wrench to hold the brass fitting. If the pin was not fully disengaging (i.e. "clicking" was heard when moving arm) then screw the **Phillips adjust screw** into the brass fitting just enough to eliminate the sound. For symptoms related to inadequate engaging, screw the screw out. Once the correct adjustment is found, retighten the jam nut against the brass fitting.

FIG. 6

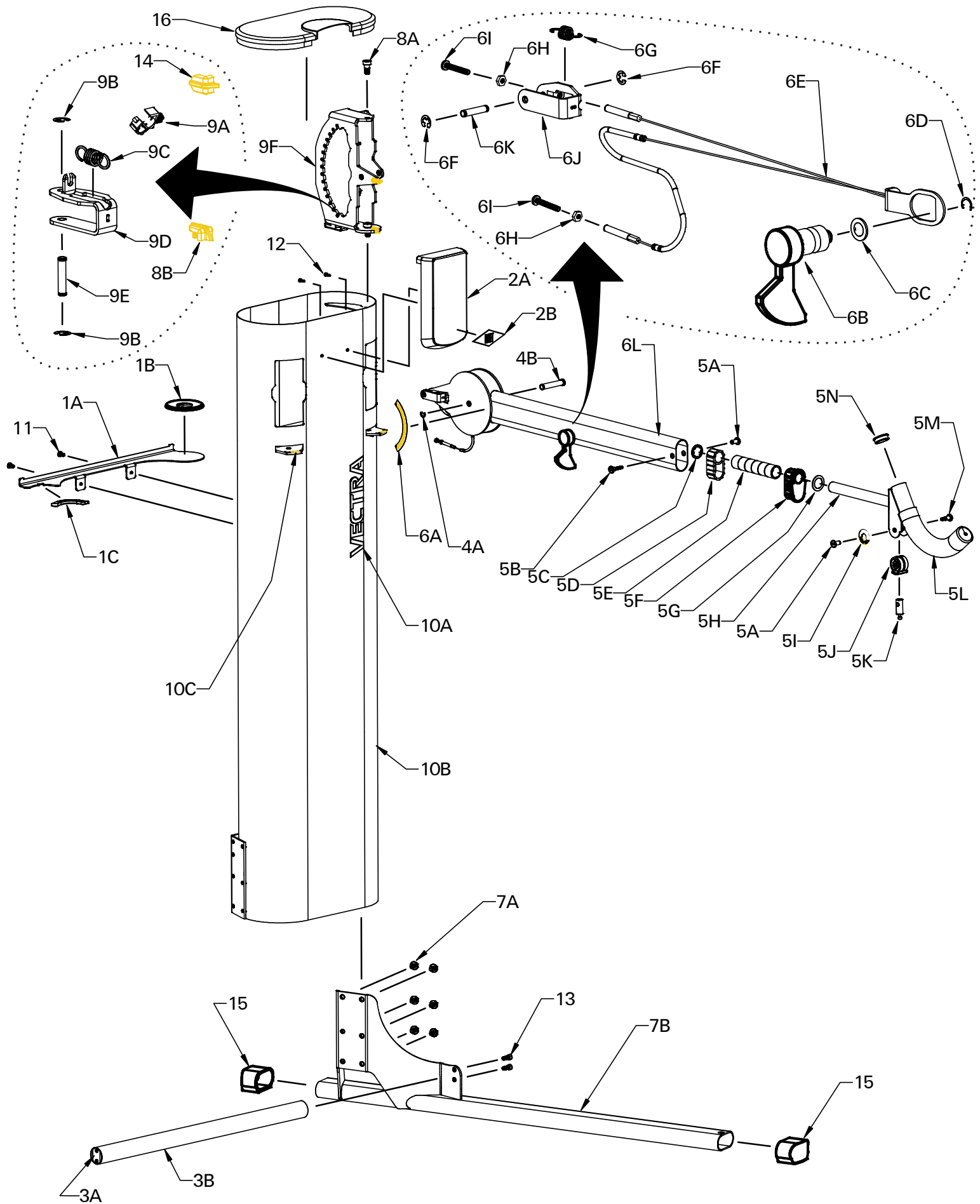
**15. INSTALL COLUMN CREST
M4 X 16MM TAP SCREW, (2)**

16. INSTALL OBOURD COLUMN CAP.

**17. TIP ACCESSORY RACK TABS
INTO COLUMN, SECURE WITH
1/4-20 X .5" PHILLIPS SCREW (2)**



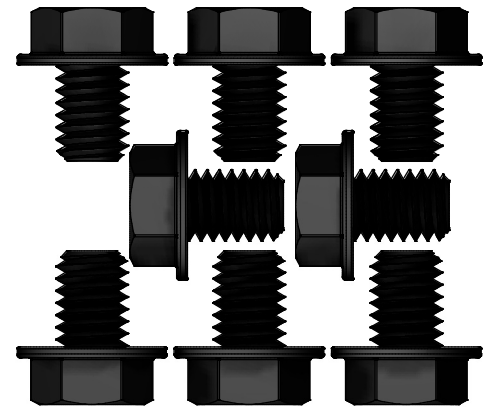
BRT Exploded View



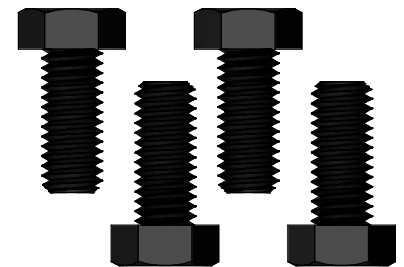
BRT Exploded View Parts List

ITEM #	PART #	QTY.	DESCRIPTION
1	72460-CLR	1	BRT ACCESSORY RACK ASSEMBLY
1A	72020-CLR	1	BRT ACCESSORY RACK WITHOUT TRIM/COASTER
1B	65640	1	VECTRA COASTER
1C	57920	1	PRESS-ON TRIM FOR DUMBBELL AND BRT ACCESSORY RACK
2	72510	1	COLUMN CREST WITH LABEL ASSEMBLY
2A	66000	1	COLUMN CREST
2B	71980	1	BRT DIAMOND LABEL
3	70770	1	FOOT BAR ASSEMBLY
3A	70760	1	FOOT BAR WELDMENT
3B	70700	1	FOOT BAR GRIP TUBE THERMOPLASTIC RUBBER
4	72500-CLR	1	RIGHT ADJUSTABLE ARM ASSEMBLY WITH STIRRUP (LEFT IS 72490-CLR)
4A	53790	1	1/2" "C" RETAINING RING
4B	43480	1	1/2"Ø CLEVIS PIVOT PIN
5	72450-CLR	1/SIDE	BRT SWIVELING STIRRUP ASSEMBLY
5A	63340	2	1/4-20 JOINT CONNECTOR NUT
5B	69710	1	1/4-20 X 1.38" SHOULDER JOINT CONNECTOR SCREW
5C	63940	2	1"Ø RETAINING RING
5D	66010	1	INNER OBOURD BUSHING
5E	20620	6	1.04"Ø ID ROUND BUSHING
5F	72430	1	EXTERNAL OBOURD PIVOT BUSHING WITH CROSS HOLE
5G	62850	1	1.03"Ø X 1.5"Ø WASHER
5H	72200-CLR	1	BRT SWIVELING STIRRUP WELDMENT
5I	71950	2	BODY RESISTABILITY ROUND LABEL
5J	70190	1	CABLE ANCHOR SWIVEL BLACK
5K	70150	1	CABLE ANCHOR BALL END
5L	27270	1	1.5"Ø X 10" GRIP
5M	70140	1	MODIFIED JOINT CONNECTOR SHOULDER SCREW
5N	13100	1	1.5"Ø BLACK TUBE CLOSURE
6	72480-CLR	1	RIGHT ADJUSTABLE ARM ASSEMBLY (LEFT IS 72470-CLR)
6A	72270	1	RIGHT ARCING HEIGHT LABEL (LEFT IS 72260)
6B	65920	1	RIGHT ADJUST PADDLE LEVER (LEFT IS 52230)
6C	12620	1	1/2" INNER DIAMETER WASHER
6D	53790	1	1/2" "C" RETAINING RING
6E	72400	1	BRT ARM DUAL ADJUST CABLE ASSEMBLY
6F	54770	2	1/4" E RING
6G	27900	1	1.25" LONG EXTENSION SPRING
6H	58920	2	10-32 JAM NUT
6I	53710	2	10-32 X 1.25 PHILLIPS SCREW
6J	72410	1	POSITION RELEASE LATCH WITH ENLARGED HOLE
6K	54760	1	1/4" E RING PIN
6L	72180-CLR	1	RIGHT ADJUSTABLE ARM WELDMENT (LEFT IS 72170-CLR)
	28040	1	4" BLACK CABLE TIE
7	72620-CLR	1	MAIN COLUMN ASSEMBLY WITH FLOOR FRAMES AND SWINGING RACKS
7A	55870	4	3/8-16 X .5" HEX FLANGE HEAD SCREWS (NEED A TOTAL OF 12)
7B	72160-CLR	1	RIGHT FLOOR FRAME WELDMENT
	72150-CLR	1	LEFT FLOOR FRAME WELDMENT
8	72610-CLR	1	MAIN COLUMN ASSEMBLY WITH SWINGING RACKS
8A	48830	4	3/8-16 X 1/2"Ø X 3/8" LONG SHOULDER SCREW
8B	71990	2	YELLOW POSITION INDICATOR (NEED A TOTAL OF 4)
	72570-CLR	1	LEFT SWINGING RACK ASSEMBLY
9	72580-CLR	1	RIGHT SWINGING RACK ASSEMBLY
9A	72360	1	SNAP-IN WIRE MANAGEMENT CLIP
9B	54770	2	1/4" E RING
9C	27900	1	1.25" LONG EXTENSION SPRING
9D	72420	1	POSITION RELEASE LATCH WITH SLOTTED CABLE CATCH
9E	54760	1	1/4" E RING PIN
9F	72380-CLR	1	RIGHT SWINGING RACK WELDMENT (LEFT IS 72370-CLR)
	72290	.51'	UHMW TAPE, 1/2" WIDE X .030" THICK
10	72600-CLR	1	MAIN COLUMN ASSEMBLY NO RACKS OR FLOOR FRAMES
10A	61720	1	SILVER VECTRA 10" LABEL
10B	72000-CLR	1	MAIN COLUMN WELDMENT WITH BALLAST
10C	72280	1	LEFT ARM WIDTH POSITION "BAR GRAPH" LABEL (RIGHT IS 72640)
	72290	.75'	UHMW TAPE, 1/2" WIDE X .030" THICK
11	72520	1	BRT HARDWARE KIT TO ASSEMBLE STANDARD PACKAGED BRT
	14500	2	1/4-20 X .5" PHILLIPS SCREW
	53790	2	1/2" "C" RETAINING RING (EXTRAS)
	55870	8	3/8-16 X .5" HEX FLANGE HEAD SCREWS (NEED A TOTAL OF 12)
12	63830	2	M4 SELF TAPPING SCREW
13	20050	4	5/16-18 X .75" LONG HEX SCREWS
14	71990	2	YELLOW POSITION INDICATOR (NEED A TOTAL OF 4)
15	61960	4	OBOURD TUBE END CAP AND FLOOR FOOT
16	72300	1	BRT OBOURD COLUMN CAP
	61990	2	14" SINGLE HANDLE
	64180	2	FOOT STRAP
	70040	2	20" EXTENSION CABLE
	72650	1	BRT BODY RESISTABILITY POSTER
	72530	1	STRETCHING POSTER
	72540	1	BRT OWNER'S MANUAL

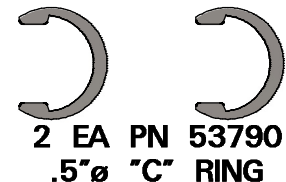
BRT Hardware



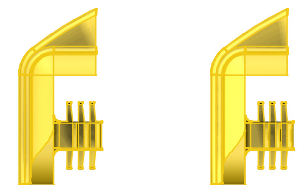
8 EA PN 55870
3/8-16 X .5 HEX SCREW



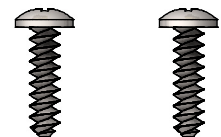
4 EA PN 20050
5/16-18 X .75 HEX SCREW



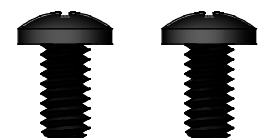
2 EA PN 53790
.5"Ø "C" RING



2 EA PN 71990
YELLOW POSITION INDICATOR



2 EA PN 63830
M4 X 16mm TAP SCREW



2 EA PN 14500
1/4-20 X .5 PHILLIPS SCREW

To purchase parts, go to <http://partsstore.vectrafitness.com/>

Vectra® BRT Limited Warranty

Vectra Fitness, Inc. warrants, to the original owner only, this Vectra BRT to be free from defects in materials and workmanship for component specific periods as outlined below. Purchaser must retain bill of sale to establish warranty rights. This Limited Warranty is valid only if machine is purchased from a Vectra authorized dealer. Defective parts will be repaired or replaced at Vectra's option, when returned to Vectra Fitness, Inc. shipping prepaid with prior authorization. No allowances for labor will be made.

Warranty Period: (All periods are from date of purchase by original consumer)

Home Use:

Structural Frame Lifetime

Other Parts 3 years

Home Use is defined as use in a family's home by the members of that family. Lifetime means while owned by the original owner.

Commercial/ Institutional Use:

Structural Frame 5 years

Other Parts 1 year

Commercial/Institutional Use is defined as any use other than Home Use.

Conditions and Exceptions: Failures due to misuse, abuse, neglect, alteration, improper assembly, repairs other than by an authorized Vectra Service Center, normal wear, damage or lack of maintenance are not covered. This Limited Warranty does not cover damages sustained during shipment. Title passes to buyer upon delivery to carrier. If product is damaged in transit, file claim with carrier.

Repairs to the Structural Frame will be made only if such repairs are necessary to make the machine functional as designed. Repairs for other reasons will not be made. Cosmetics are not covered by this Limited Warranty. This is a powder coated steel product, and as such rust-resistant in most settings. Any rusting and/or corrosion is completely outside the scope of this Limited Warranty. Owners who live in humid climates or intend to install this machine in a humid area such as outside, near a pool, hot tub, or sauna should apply an automotive wax to delay rusting. The corrosive effects of sweat, cleaners, body lotions, sunlight, etc. are also the responsibility of the owner.

It is our policy to repair or replace components rather than entire machines or assemblies. It is also our policy to repair rather than replace frame components. Repairs of structural parts will be made using appropriate technology and may be visible. Repaired items will be refinished as needed, but the new finish may not match the old.

Replacement and Repair Expenses: Vectra Fitness will provide only replacement parts or repair to parts under this Limited Warranty, and will pay for standard ground shipping of such parts to the consumer. The owner of the machine is responsible for all other costs. Such costs may include, but are not limited to: labor charges for service, removal, repair, and re-installation of the Vectra product or any component part; shipping, delivery, handling, and administrative charges for returning parts to Vectra; all necessary or incidental costs related to installation of the repaired or replacement part.

Claim Procedure: Please contact the Vectra authorized dealer from whom you purchased your machine should warranty service be required. Items returned to Vectra without prior factory authorization or freight collect will not be accepted. Vectra assigned RMA number MUST be prominently shown on OUTSIDE of carton. Copies of original bill of sale MUST accompany any merchandise returned for warranty service. Also each returned item must be accompanied by the following information: RMA number assigned by Vectra, product serial number, description of problem experienced, and instructions for return of repaired/replaced part. Parts should be shipped to Vectra Fitness in their original carton or equivalent packaging. Vectra Fitness will not be responsible for any loss or damage incurred in shipping.

No other express or implied warranties have been made or will be made on behalf of Vectra Fitness with respect to any Vectra product or the operation, repair or replacement of any Vectra product. Vectra Fitness shall not be responsible for injury; loss of use of the Vectra product; inconvenience; loss or damage to personal property; whether direct or indirect; or for incidental or consequential damages. This Limited Warranty is LIMITED STRICTLY to the terms stated herein and no other express warranties or remedies shall be binding on us. THIS LIMITED WARRANTY AND ALL WARRANTIES WHICH MAY BE IMPLIED UNDER STATE LAW, INCLUDING, BUT NOT LIMITED TO, WARRANTIES OF MERCHANTABILITY AND WARRANTIES OF FITNESS FOR A PARTICULAR PURPOSE, EXPIRE WITH THE TRANSFER OF OWNERSHIP FROM THE ORIGINAL OWNER. ANY IMPLIED WARRANTY OF MERCHANTABILITY OR FITNESS FOR ANY PARTICULAR PURPOSE SHALL BE LIMITED TO ONE YEAR FROM DATE OF PURCHASE. REPAIR OF THE PRODUCT AS PROVIDED UNDER THIS LIMITED WARRANTY IS THE EXCLUSIVE REMEDY OF THE CONSUMER. IN NO EVENT SHALL WE BE LIABLE FOR INCIDENTAL OR CONSEQUENTIAL DAMAGES, FOR BREACH OF THIS LIMITED WARRANTY, OR ANY OTHER WARRANTY EXPRESS OR IMPLIED. Some states do not allow limitations on how long an implied warranty lasts, or do not allow the exclusion of incidental or consequential damages, so the above limitations or exclusions may not apply to you.

Consumers Rights: This Limited Warranty gives you specific legal rights, and you may also have other rights which vary from state to state.

Vectra Fitness, Inc.
7901 South 190th Street
Kent, WA 98032 U.S.A.
www.vectrafitness.com

Protected by one or more of the following Patent Numbers: RE34,572; 4,900,018; 4,986,538; 5,336,148; 5,378,216; 5,395,295; 5,462,510; 5,605,523; 5,672,143; 5,779,601; 6,482,135; 6,508,748; 6,582,346; 6,994,660; 7,150,701; 7,255,665; 7,303,514; 7,695,418; 7,846,075; 7,909,742; 7,922,631; D320,246; D320,247; D320,248; D329,563; D454,168; D457,581; D460,508; D462,731; D576,230; D576,231; D576,232; D576,233; D576,234; CN1,309,738; CN2,023,972; J3,117,451.

Other U.S. and foreign patents pending. Vectra, On-Line and Cornerstone are registered trademarks of Vectra Fitness, Inc.. Series VX, VX-FT, ARC (Automatic Ratcheting Cam), AL (Arm-Leg), Vector, BRT, Body ResiStability, and VFT are trademarks of Vectra Fitness, Inc.