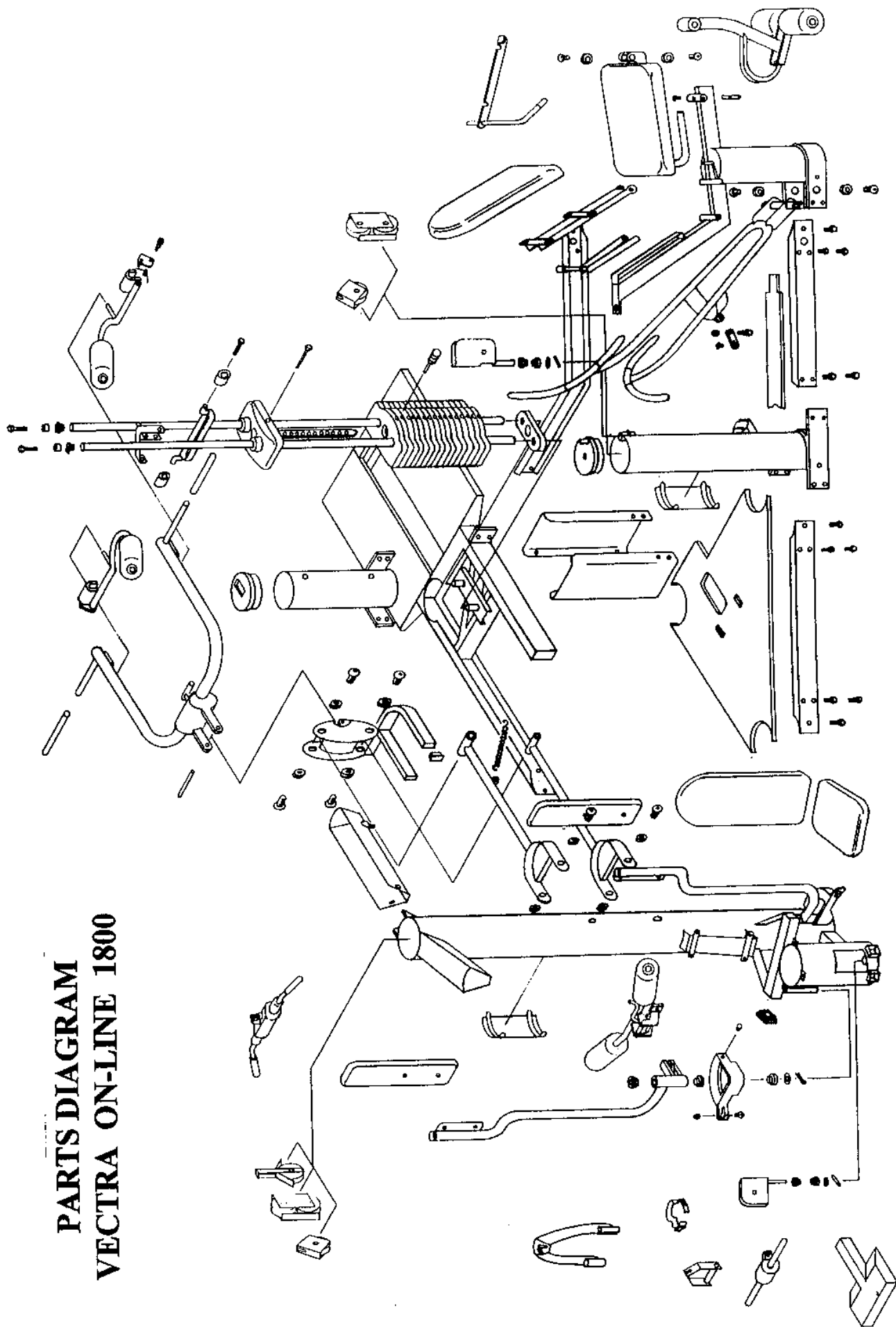
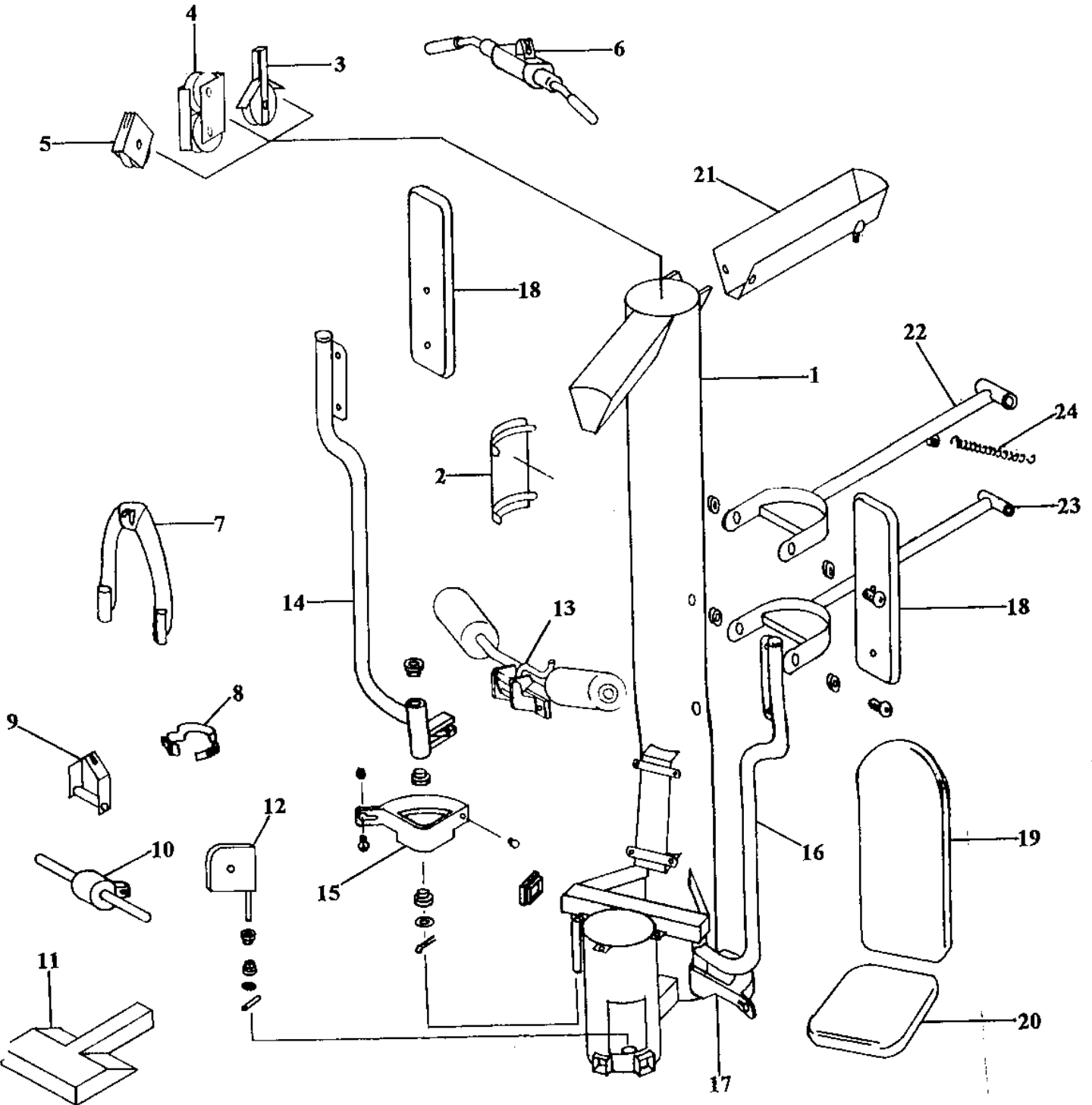


**PARTS DIAGRAM
VECTRA ON-LINE 1800**

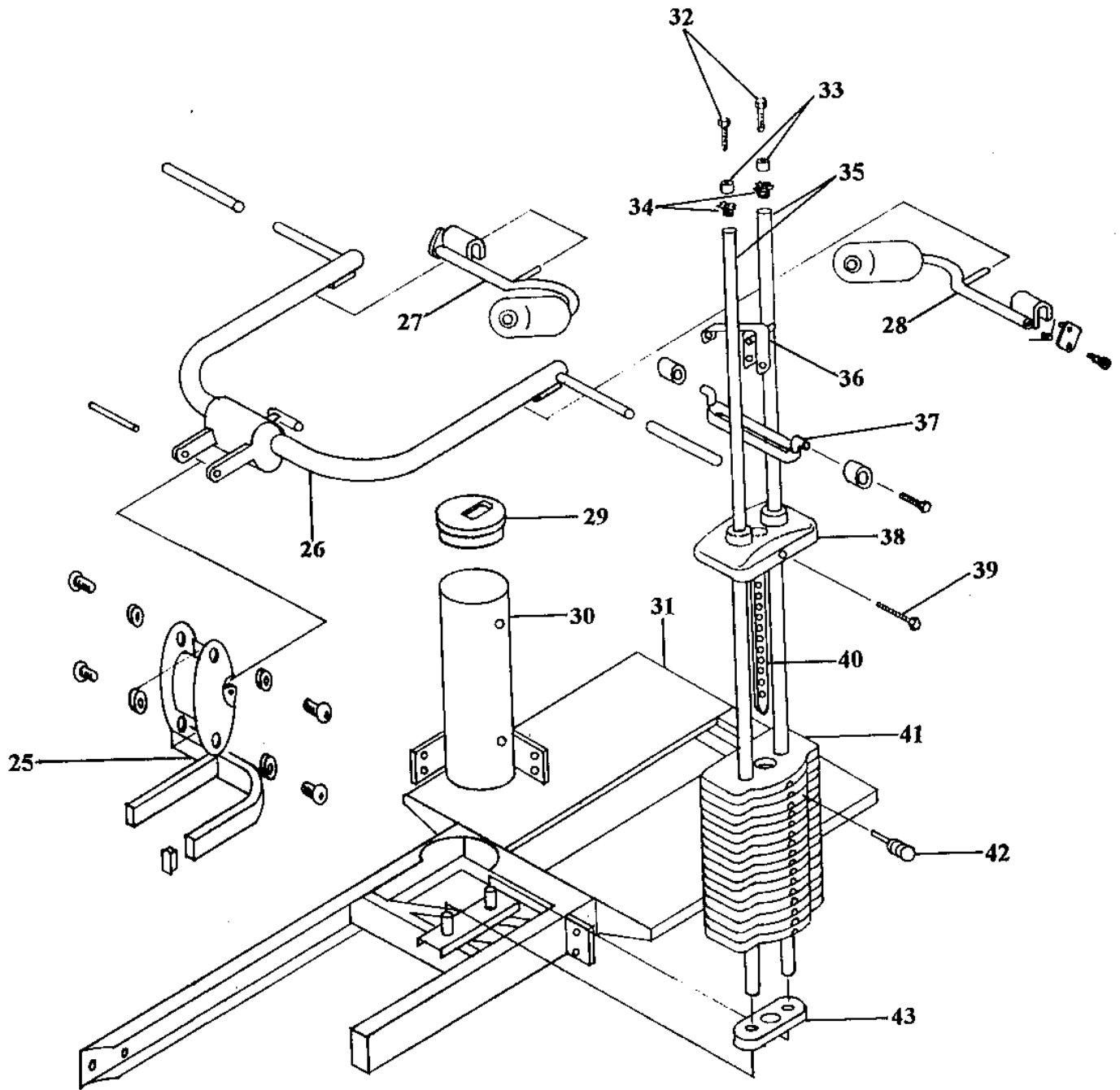


PARTS DIAGRAM VECTRA ON-LINE 1800

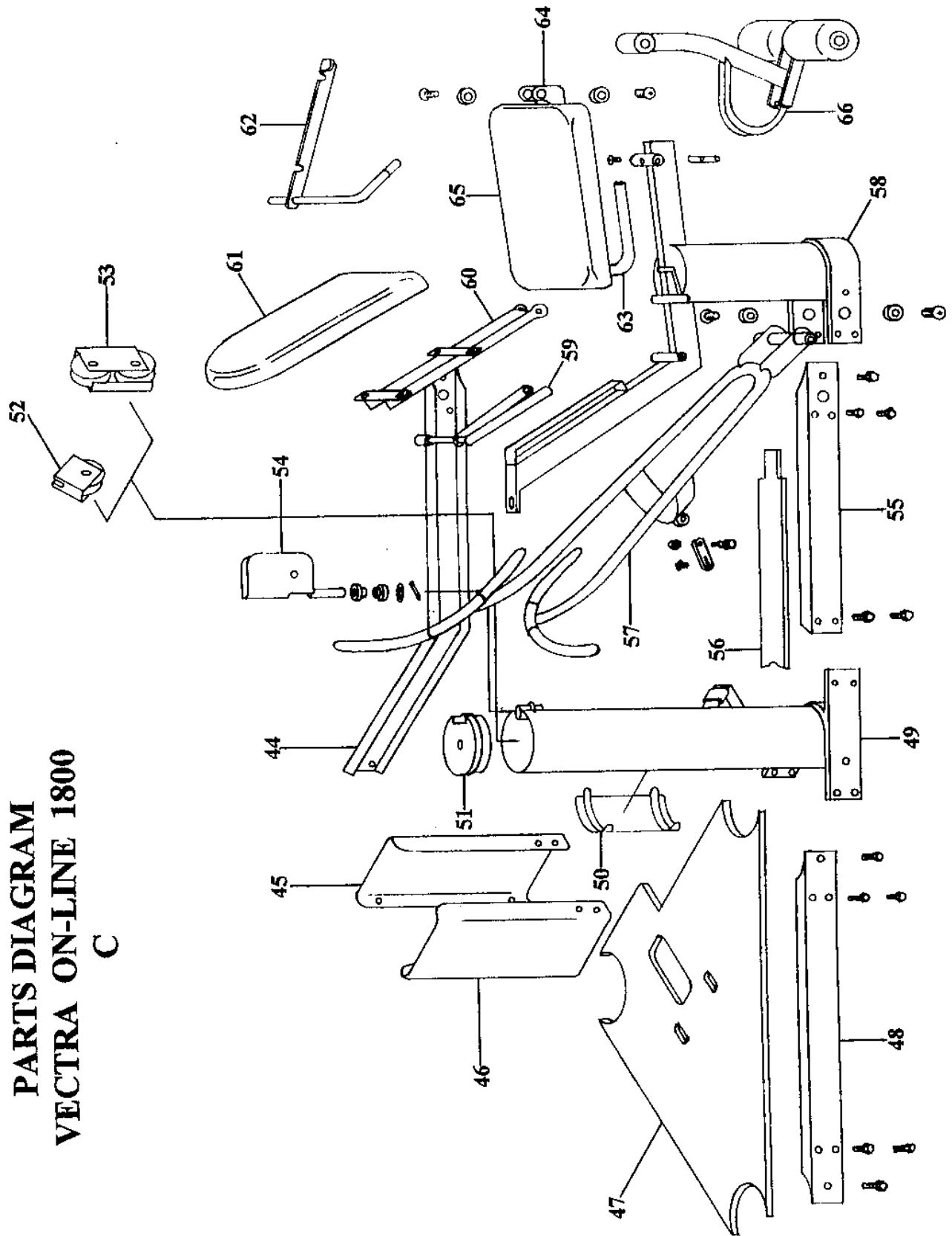
A



PARTS DIAGRAM
VECTRA ON-LINE 1800
B



**PARTS DIAGRAM
VECTRA ON-LINE 1800
C**



PARTS LIST

VECTRA ON-LINE 1800

ITEM	PART#	DESCRIPTION	QTY	ITEM	PART#	DESCRIPTION	QTY
1	39490	Main Column Assembly	1		27900	Extension Spring 1.25L x .5D	1
	39210	Main Column Weldment	1	14	37790	Right Butterfly Arm Assembly	1
	10580	Pulley 4.5" Dia.	9		28820	Right Butterfly Arm Weldment	1
	10600	Locking Nut 3/8-16 Hex	7	11450	Bronze Bushing	2	
	12760	Screw 3/8-16 x 1.75 Hex	7	13100	Tube Closure 1.5" Dia.	1	
	12620	Machine Bushing 7/8 x 1/2	1	27510	O-Ring 1.375 ID	1	
	13090	Tube Closure 2 x 2	2	27910	Roll Pin 5/32 D x 7/8 L	1	
	2	26180	Access Door Assembly	3	28151	Butterfly Arm Pawl	1
	3	14200	Adjustable Pulley Assembly	1	28200	Spring, Butterfly Arm Pawl	1
11600		Adj. Pulley Weldment	1	42220	Tube, Butterfly Pawl Bumper	1	
10580		Pulley 4.5" Dia.	1	28980	Label, Butterfly Arm "Arc"	1	
12760		Screw 3/8-16 x 1.75 Hex	1	15	28910	Right Butterfly Cam Assembly	1
10600	Locking Nut 3/8-16 Hex	1	28800		Right Butterfly Cam Weldment	1	
14210	Screw 3/8-16 x 4 Hex Full Thread	1	11450		Bronze Bushing	1	
4	14180	Double Moving Pulley Assembly	1		13740	Locking Nut 1/4-20 Hex	1
	20000	Double Moving Pulley Bracket	2		14500	Screw 1/4-20 x .5 P/tp	1
	10580	Pulley 4.5" Dia.	2	28990	Bumper, Butterfly Cam	1	
	10600	Locking Nut 3/8-16 Hex	2	16	37890	Left Butterfly Arm Assembly	1
12760	Screw 3/8-16 x 1.75 Hex	2	28810		Left Butterfly Arm Weldment	1	
5	14190	Single Moving Pulley Assembly	1		11450	Bronze Bushing	2
	13570	Single Moving Pulley Weldment	1		13100	Tube Closure 1.5" Dia.	1
	10580	Pulley 4.5" Dia.	1	27910	Roll Pin 5/32 D x 7/8 L	1	
6	10600	Locking Nut 3/8-16 Hex	1	28151	Butterfly Arm Pawl	1	
	12760	Screw 3/8-16 x 1.75 Hex	1	28200	Spring, Butterfly Arm Pawl	1	
	14770	Lat Bar Assembly	1	42220	Tube, Butterfly Pawl Bumper	1	
	11750	Lat Bar Weldment	1	28980	Label, Butterfly Arm "Arc"	1	
7	11760	Foam Grip 7/8 ID x 8"	2	17	28920	Left Butterfly Cam Assembly	1
	13240	Foam Grip 7/8 ID x 4"	2		28790	Left Butterfly Cam Weldment	1
	22110	Spring Loaded Plunger	1		11450	Bronze Bushing	1
	23330	Attachment Bar Pad	2		13740	Locking Nut 1/4-20 Hex	1
	8	13270	AB Crunch Strap Assembly	1	14500	Screw 1/4-20 x .5 P/tp	1
		27520	O-Ring 3/4 ID	1	28990	Bumper, Butterfly Cam	1
	9	13280	Leg Strap Assembly	1	18	16460	Butterfly Arm Pad Assembly
27520		O-Ring 3/4 ID	1	16470		Butterfly Arm Pad	1
10	14360	D-Handle Assembly	1	16450		Butterfly Arm Pad Backing	1
	14340	D-Handle, Formed	1	15890	Screw 1/4-20 x 1.25	3	
	14350	D-Handle Tube	1	15910	Finishing Washer 1/4 Black Nylon	3	
	15810	Tube Connector 1/4-20 x 3/4	2	19	29280	Butterfly Seat Back	1
	15800	Spacer .605 OD x .25 ID x .375	2		20	19670	Butterfly Seat Bottom
	15890	Screw 1/4-20 x 1.25	2	21	39780	Upper Stack Member Assembly	1
	15910	Finishing Washer, 1/4" Black Nylon	2		39280	Upper Stack Member Weldment	1
	11	14320	Curly Bar Assembly	1	10580	Pulley 4.5" Dia.	1
12800		Curly Bar Weldment	1	23300	Screw 3/8-16 x 1.25 Hex	1	
11760		Foam Grip 7/8 ID x 8"	2	22	39730	Upper Press Lever Assembly	1
23330		Attachment Bar Pad	2		39310	Upper Press Lever Weldment	1
12	39610	Low Row Block Assembly	1	11920	Freeway Bearing	2	
	39230	Low Row Block Weldment	1	13790	Screw 1/2-13 x 1 Button Head Black	2	
	17650	Safety Tread - 8" x 17"	1	23	39750	Lower Press Lever Assembly	1
29040	6" Low Pulley Weldment	1	39290		Lower Press Lever Weldment	1	
13	25220	Pulley 6" Dia.	1	11920	Freeway Bearing	2	
	24160	Pulley Pivot Bushing	2	13790	Screw 1/2-13 x 1 Button Head Black	2	
	27910	Roll Pin 5/32 D x 7/8 L	1	24	22960	Extension Spring 8.4" L x 1" D	1
	41800	Adjustable Lat Hold Down	1		25	39710	Press Housing Assembly
	41850	Adj. Lat Hold Down Weldment	1	39300		Press Housing Weldment	1
	10340	Foam Roller 4 x 7 x .75 Hole	2	11920	Freeway Bearing	4	
	29600	Roller Pad Retainer Washer	2	13790	Screw 1/2-13 x 1 Button Head Black	4	
	13110	Tube Closure 1" Dia.	2	15780	Tube Closure 1 x 2	2	
	18330	Tube Closure 1/2 x 1 1/2 Blue	1	26	39650	Press Arm Assembly	1
	17930	Spring Pin .25 x 2.75	1		39240	Press Arm Weldment	1
21920	Screw 1/4-20 x 1.25 Hex	2	11760		Foam Grip 7/8 ID x 8"	2	

ITEM	PART#	DESCRIPTION	QTY
	42250	Tube Closure 1.75" Dia.	2
	17930	Spring Pin .25 x 2.75	1
	27900	Extension Spring 1.25 L x .5 D	1
	39250	Press Latch Weldment	1
	38350	Press Latch Pin Weldment	1
	43640	Plated Press Latch Pin 39670	1
	39660	Plain Roll Pin .25 x 4"	1
	13110	Tube Closure 1" Dia.	2
27	41440	Right Squat Attachment Assembly	1
	41420	Right Squat Attachment Weldment	1
	10340	Foam Roller 4 x 7 x .75 Hole	1
	29600	Roller Pad Retainer Washer	1
	13110	Tube Closure 1" Dia.	1
	41550	Torsion Spring, Right	1
	41530	Squat Attachment Latch	1
	41540	Spring Pin .25 x .75	1
	27330	Shoulder Screw 5/16D x 1/4-20	1
	41470	Label, Right Squat	1
28	41430	Left Squat Attachment Assembly	1
	41410	Left Squat Attachment Weldment	1
	10340	Foam Roller 4 x 7 x .75 Hole	1
	29600	Roller Pad Retainer Washer	1
	13110	Tube Closure 1" Dia.	1
	41550	Torsion Spring, Left	1
	41530	Squat Attachment Latch	1
	41540	Spring Pin .25 x .75	1
	27330	Shoulder Screw 5/16D x 1/4-20	1
	41470	Label, Left Squat	1
29	17410	Press Column Cap	1
30	39630	Press Column Assembly	1
	39340	Press Column Weldment	1
	10580	Pulley 4.5" Dia.	1
	10600	Locking Nut 3/8-16 Hex	1
	12760	Screw 3/8-16 x 1.75 Hex	1
	20860	Label, Vectra 8"	1
31	39460	Main Platform Assembly	1
	39220	Main Platform Weldment	1
	39470	30" Stair Tread	2
32	40360	Screw 5/16-18 x 1.25	2
33	16520	Spacer .810 OD x .520 ID x .5	2
34	11340	Tube Connector 5/16-18 x 1"	2
35	21960	Gulde Rod 74.74"	2
36	39380	Top Plate Attachment Weldment	1
	23090	Spring Pin .313 x 2.25	1
	27990	Christmas Tree Clip	1
37	39390	Top Plate Wheel Weldment	1
	39900	Top Plate Bumper	1
	40250	Wheel, Black 47 x 28mm 608ZZ	2
	40910	Screw 5/16-18 x 1.25 Hex Black	2
38	26100	Top Plate Assembly	1
	26070	Top Plate, Painted	1
	20620	Weight Plate Bushing	4
	26130	Top Plate Washer	1
39	29190	Screw 3/8-16 x 3"	1
40	20630	Selector Shaft	1
41	17021	10 LB Vectra Weight Plate	20
	20620	Weight Plate Bushing	2 ea.
	20760	Selector Pin Assembly	1
42	20750	Vectra Weight Stack Bumper	1
44	39260	Leg/Platform Frame Weldment	1
45	39440	Partial Weight Guard Assembly	1
	40550	Partial Weight Guard	1
	22050	Strip, .063 Black Extruded Trim	1
	28010	Label, Warning:...	1
46	39420	Full Weight Guard Assembly	1
	40530	Full Weight Guard	1
	22050	Strip, .063 Black Extruded Trim	1
47	39270	1800 Main Floor Piece	1

ITEM	PART#	DESCRIPTION	QTY
48	39370	Main Col/Leg Frame Member	1
49	39570	Row/AB/Leg Column Assembly	1
	10580	Pulley 4.5" Dia.	4
	10600	Locking Nut 3/8-16 Hex	2
	12620	Machine Bushing 7/8 x 1/2	1
	12760	Screw 3/8-16 x 1.75 Hex	2
	13550	Retainer, Single Moving Cable	1
	15920	Accessory Attachment Clip	1
	16620	Row Arm Stop Bumper	1
	28040	Cable Tie 4"	3
	22100	Screw 3/8-16 x .5 Hex	2
	23300	Screw 3/8-16 x 1.25 Hex	2
50	26180	Access Door Assembly	1
51	39200	Row/AB Column Cap	1
52	14190	Single Moving Pulley Assembly	1
	13570	Single Moving Pulley Weldment	1
	10580	Pulley 4.5" Dia.	1
	10600	Locking Nut 3/8-16 Hex	1
	12760	Screw 3/8-16 x 1.75 Hex	1
	27990	Christmas Tree Clip	1
53	14180	Double Moving Pulley Assembly	1
	20000	Double Moving Pulley Bracket	2
	10580	Pulley 4.5" Dia.	2
	10600	Locking Nut 3/8-16 Hex	2
	12760	Screw 3/8-16 x 1.75 Hex	2
54	39590	AB Pulley Assembly	1
	39180	AB Pulley Weldment	1
	10580	Pulley 4.5" Dia.	1
	10600	Locking Nut 3/8-16 Hex	1
	12760	Screw 3/8-16 x 1.75 Hex	1
	24160	Pulley Pivot Bushing	2
	27910	Roll Pin 5/32D x 7/8L	1
55	39360	Right Row/Leg Frame Member	1
56	21310	Small Floor Piece	1
57	21250	Row Arm Assembly	1
	21440	Row Arm Weldment	1
	20890	Foam Grip 7/8 ID x 9"	2
	21470	Foam Grip 7/8 ID x 8"	2
	27360	Cable Retainer Bracket	1
	27330	Shoulder Screw 5/16D x 1/4-20	1
	13740	Locking Nut 1/4-20 Hex	1
	27990	Christmas Tree Clip	1
58	41170	Leg/AB Station Assembly	1
	41150	Row/AB/Leg Column Weldment	1
	10580	Pulley 4.5" Dia.	1
	10600	Locking Nut 3/8-16 Hex	3
	11920	Freeway Bearing	2
	12760	Screw 3/8-16 x 1.75 Hex	1
	15780	Tube Closure 1 x 2	1
	17750	Shaft Retainer .5	2
	17950	Nylon Washer .63 x .38	2
	18110	Bench Pivot Shaft	1
	18330	Tube Closure 1/2 x 1 1/2	1
59	21390	Adjustable Seat Support Weldment	1
60	21630	Seat Back Brace Weldment	1
	11410	Screw 3/8-16 x .75 Hex	2
61	21410	Row/AB Seat Back	1
62	11020	Seat Arm Lock Weldment	1
	17750	Shaft Retainer .5 Dia.	1
	18330	Tube Closure 1/2 x 1 1/2 Blue	2
63	15960	Seat Handle Weldment	1
	11760	Foam Grip 7/8 ID x 8"	2
64	10160	Leg Machine Mount Weldment	1
	11920	Freeway Bearing	2
65	17110	Leg/AB Seat Bottom	1
	20850	Screw 1/4-20 x .75 Hex	6
66	22970	Adjustable Leg Developer Assembly	1
	22920	Adj. Leg Developer Weldment	1

ITEM	PART#	DESCRIPTION	QTY
66	22970	Adjustable Leg Developer Assembly	1
	22920	Adj. Leg Developer Weldment	1
	10340	Foam Roller 4 x 7 x .75 Hole	2
	29600	Roller Pad Retainer Washer	2
	13110	Tube Closure 1" Dia.	2
	22910	Leg Machine Bumper	1
	13740	Locking Nut 1/4-20 Hex	1
	14500	Screw 1/4-20 x .5 Php	1
	23090	Spring Pin .313 x 2.25	1
67	18560	Cable Assembly, High Pulley/Stack	1
68	28840	Cable Assembly, Butterfly	1
69	40960	Cable Assembly, Low Pulley/Leg	1
70	40970	Cable Assembly, Press/ Main Col.	1
71	40980	Cable Assembly, Row	1
72	41010	Cable Assembly, AB/Leg Column	1
73	39890	1800 Hardware Kit	1
	11410	Screw 3/8-16 x .75 Hex	31
	12340	Cotter Pin 3/16 x 1.5	2
	13750	Machine Bushing 1/2 x 1	2
	13790	Screw 1/2-13 x 1 Button Head ,Black	12
	14500	Screw 1/4-20 x .5 Php	1
	20850	Screw 1/4-20 x .75 Hex	9
	22100	Screw 3/8-16 x .5 Hex	11
	22960	Extension Spring 8.4 x 1 Dia.	1
	26310	Plated Bar, Leg Mount Pivot	1
	40220	Shoulder Screw 1/2D - 3/8-16	2
	41220	Nylon Washer .875 x .39 Black	1
	42240	Washer, SAE 3/8 Flat Black	5
74	39510	Label, On-Line 1800	1
75	20860	Label, Vectra 8"	1

ITEM	PART#	DESCRIPTION	QTY
76	28010	Label, Warning:...	1
77	28020	Label, Manufactured By:...	1
78	22230	Label, Weight Plate Numbers	1
79	39400	Instruction Manual, Vectra 1800	1
80	39410	Poster, Vectra 1800	1

Vectra On-Line 1800	
Part #	Part Description
69020	Ab Crunch Strap
39590	Ab/Row Pulley Bracket assembly with pulley
39180	Ab/Row Pulley Bracket- without pulley
57900	Access Door (painted)
2.5AO	Add-on plate- 2.5 pound
5.0AO	Add-on plate- 5 pound
14200	Adjustable Pulley assembly- with pulley (adjustment bolt #14210 is separate)
11600	Adjustable Pulley Bracket- no pulley or hardware
21770	Adjustable Pulley weldment (main column)- no pulley/hardware (uses 22030 bolt)
11920	Bearing- freeway for most pivot points, used with #13790 button head bolts
48590	Bench Cam Follower weldment
48510	Bench Leg Stop/Hold weldment
48500	Bench Main Frame weldment
48550	Bench Seat Bottom weldment
21920	Bolt- 1/4-20 X 1.25 hex for lat hold down
48830	Bolt- 1/2" dia. X 3/8 long shoulder for press handle
13790	Bolt- 1/2-13 X 1 button head for most freeway bearing pivot points
20850	Bolt- 1/4 X 20 X .75 for mounting upholstery
22100	Bolt- 3/8-16 x 1/2 blk- frame OBSOLETE (replaced with #55870)
55870	Bolt- 3/8-16 X 1/2 blk hex with flange for frame
55860	Bolt- 3/8-16 X 3/4 blk hex with flange for frame
23300	Bolt- 3/8-16 X 1.25 to attach some pulleys (metal on 1 side)
52910	Bolt- 3/8-16 X 1.5 for columns, pulley assemblies (double, single, adj., etc.)
12760	Bolt- 3/8-16 X 1.75 for most pulley assemblies & column caps
29190	Bolt- 3/8-16 X 3 for top plate
14210	Bolt- 3/8-16 X 4 for most adjustable pulleys
44970	Bolt- 5/16 dia. shoulder X 1.5L 1/4-20 for row arm pivot retro kit
27330	Bolt- 5/16 X .625, 1/4-20 shoulder for squat latch & row cable retainer
40910	Bolt- 5/16-18 X 1.25 for 1850 top plate wheel assy.
20000	Bracket- for double-moving pulley (2 required)
20750	Bumper- bottom of weight stack OBSOLETE (replaced with two each #57670)
48680	Bumper- for bench strut
42220	Bumper Tube- for butterfly arm pawl
47590	Bumper- used at row arm rest/down stop
57670	Bumper weight stack (two required)- replaces single piece 20750
39900	Bumper/Cover/Strip- (rubber) top plate wheel assembly where cable connects
54130	Bumper/Plug- 3/4 inch stem for butterfly cam, calf/row block, leg/ab seat & bench
28990	Bumper/Plug- for butterfly cam, leg/ab seat rest (replaced with #54130)
11450	Bushing- bronze for butterfly cams
43780	Bushing- nylon for butterfly arm
24160	Bushing- nylon for pivot pulley and bench
20620	Bushing- weight plate (all) & top plate
37890	Butterfly Arm assembly- left-side
37790	Butterfly Arm assembly- right-side for
28920	Butterfly Cam assembly- left-side
28910	Butterfly Cam assembly- right-side
47930	10-inch extension for low pulley
41010	Cable- ab crunch- 79.0" long
28840	Cable- butterfly station- 70.84" long
44980	Cable- for row arm retro kit
18560	Cable- high pulley- 153.2" long
40960	Low pulley/leg extension- 264.0" long (10.0"/12.5" stripped on ends) OBSOLETE
40960-EX	LP 1800 LP/EXT Cable Kit
70780	LP 1800 LP/EXT Cable
40970	Cable- press station- 137.0" long
40980	Cable- row station- 28.18" long

Vectra On-Line 1800	
Part #	Part Description
42140	Cable set- 1800 complete
22120	Cable Stop- slotted for leg extension cable (set screw #22280 sold separately)
17160	Cable Tie
15920	Clip- accessory attachment used to anchor cable in row column
44960	Clip- for retro row arm kit (row cable retainer)
65580	Close Grip Press Attachment- left-side
65570	Close Grip Press Attachment- right-side
CGPB	Close Grip Press Attachment Set- Black- allows close grip exercises on press arms
CGPCP	Close Grip Press Attachment Set- Classic Pewter- for close grip exercises on press arms
CGPSS	Close Grip Press Attachment Set- Sterling Silver- for close grip exercises on press arms
CGPW	Close Grip Press Attachment Set- White- allows close grip exercises on press arms
17440	Column Cap- main column
17410	Column Cap- press station
39200	Column Cap- row station
12340	Cotter Pin- 3/16 X 1.5 inch for butterfly arms/cams (used w/#13750 washer)
63540	Curl Bar assembly- (straight) BLACK only
14180	Double Moving Pulley assembly- with pulleys & hardware
53860	Floor Piece/Board- 1800 large triangular <i>FIT FOR LIFE VERSION</i>
39270	Floor Piece/Board- 1800 large triangular (also see special version, #53860)
42860	Floor Piece/Board- small, for row/leg extension station
10340	Foam Roller
39370	Frame Member- main column to row station ("E")
39360	Frame Member- right side row station to leg extension station ("G")
39260	Frame Weldment- leg station to platform
13240	Grip- 4 Inch for inner section of lat bar
47580	Grip- 7.13 inch used on row arm
11760	Grip- 7/8 I.D. X 8 inch- standard- REPLACED with #61890 "SS Cap" version
61890	Grip- 8-inch "SS Cap" version- replaces #11760
55430	Guide Rod- 74.74 inches, includes tube connector, spacer & bolt
62000	Handle- Single Grip 8-inch strap (replaces D-Handle)
39890	Hardware/Bolt Kit- 1800
40030	Inner Box- filled with accessories, frame pieces, hardware, etc.
28020	Label- "Manufactured by..."
20860	Label- "Vectra" 8 inch
28010	Label- "Warning..." for wt. guard
48950	Label- "Warning..." for bench
39510	Label- large "On-Line 1800"
43820	Label- left-side squat
43830	Label- right-side squat
60600	Label- wt. stack number sheet standard stacks -REVISED 12/04 <comment>
62640	Lat Bar assembly
41800	Lat Hold Down- deluxe version
41530	Latch- Squat Attachment left & right- <i>for original version squats only</i>
53930	Latch/Lever- current version for squat attachments (9/00- uses 54010 spring pin)
48350	Leg Developer assembly with foam rollers OBSOLETE
48280	Leg Developer Mount (banana)
48330	Leg Developer w/o rollers OBSOLETE
54090	Leg Developer- current version with contoured leg pads
16710	Leg/Ab Seat Bottom assembly- w/upholstery, handle, banana <comments>
16720	Leg/Ab Seat Handle/Lock assembly- with lock/latch
17110	Leg/ab station seat bottom
41170	Leg/ab Station/Column assembly
54050	Leg/Ankle Strap
25850	Low Pulley Bracket- 4½ Inch without pulley and hardware
29040	Low Pulley Bracket- 6 Inch without pulley
39610	Low Row block

Vectra On-Line 1800	
Part #	Part Description
39490	Main Column assembly
39400	Manual- 1800
10600	Nut - locking 3/8-16 hex for most pulley assemblies
17340	Nut- 1/2-13 hex jam for adjustable pulley
13740	Nut- 1/4-20 for row arm cable retainer pivot
27520	O-Ring- .75 ID for leg strap and ab strap
27530	O-Ring- 1 ID X 1/8 W neoprene for ORIGINAL selector pins
27510	O-Ring- 1.375 ID for butterfly arm
57570	Padding- center of curl and lat bar, etc. (1 per bar)- replaces 23330
23330	Padding- center of curl and lat bar, etc. Obsolete - replaced with 57570
28151	Pawl- for butterfly arms
28930	Pin/Dowel- .25 DIA X 1 for butterfly arm pawl
48610	Pinnacle Bench assembly- without upholstery (can't use current bench)
26310	Pivot Bar- for leg/ab station seat assembly (uses #14500 screw)
46830	Pivot Bar- used on Pinnacle Bench
39460	Platform assembly- for bench/press station
27990	Plug (Christmas tree)- black plastic for cable retainer openings
39410	Poster- 1800
39250	Press Arm Latch weldment- 1800
39650	Press Arm/Handle assembly 1800
39630	Press Column assembly
39710	Press Housing assembly
39350	Press Latch Pin weldment- "H" shaped piece- shaft goes into this
39750	Press Pivot Arm assembly- LOWER
39730	Press Pivot Arm assembly- UPPER
10580	Pulley- 4.5-inch
25220	Pulley- 6 inch
41880	Release Pawl/Lever- for adjustable lat hold down
20660	Retainer- for cable on leg developer and top of weight stack
46920	Retainer- for row arm cable
48340	Roll Pin- 5/16D X 1.25 for standard & current version leg developer
27910	Roll Pin- 5/32D X 7/8L for swivel pulleys, butterfly arm pawls, etc.
39660	Roll Pin- for 1800/3800/4800 press handle
21250	Row Arm assembly
43620	Row Arm Retrofit Kit- for row cable retainer wear-through on old models
39570	Row/Ab Column assembly
47820	Safety Tread- for row block
48400	Safety/Stair Tread- for main platform 28.5 inches long
14500	Screw- 1/4-20 X .50 phillip for seat pivot bar, etc.
15890	Screw- 1/4-20 X 1.25 OPH for b/fly arm pads & D-handle
22280	Screw- 1/4-20 X .25 set screw for slotted cable stop
11020	Seat Arm Lock weldment
21630	Seat Back Brace/Seat Back Mount- leg/ab station
21390	Seat Back Support/Brace- leg/ab station (adjustment)
15960	Seat Handle weldment
20760	Selector Pin- ORIGINAL Vectra Precision plates ONLY OUT OF STOCK
53600	Selector Pin- short (4-3/8 in shaft) ORIGINAL Vectra Precision 10 LBS plates ONLY
20630	Selector Shaft- standard for 210 and 260 pound weight stacks (20 hole)
18110	Shaft- .05 DIA used on bench
48650	Shaft- for bench main pivot
48620	Shaft- for zinc/carb bench cam follower
17750	Shaft Retainer- .5 shaft (large) for most shafts
39670	Shaft/Pin- for press latch (replaces 43640)
54700	Shim Kit- for bench not centered w/press arm (need color, include drawing)
60510	Single Moving Pulley assembly- with pulley & hardware
60500	Single Moving Pulley bracket- no pulley & hardware

Vectra On-Line 1800	
Part #	Part Description
15800	Spacer- .615 X .25 X .375L nylon for D-handle
16520	Spacer- .81 X .52 X .5 nylon for guide rods
53990	Spring- both sides current version squat attachment latches (9/00)
28200	Spring- butterfly arm pawl
27900	Spring- ext. 1.25FL for LHD and press handle
22960	Spring- extension 8.4 x 1" dia. for press station weight reduction
17930	Spring Pin- .25 X 2.75 for lat/leg hold down & press handle
23090	Spring Pin- .313 X 2.25 for 1850 top plate wheel assy.
54010	Spring Pin- 5/32 X 1-1/4 for current version squat latch (9/00)
41540	Spring Pin- used on original version squat latch
50680	Spring- squat latch ORIGINAL versin LEFT-side (modified)
50690	Spring- squat latch ORIGINAL versin RIGHT-side (modified)
41430	Squat Attachment- left-side
41440	Squat Attachment- right-side
39380	Stack Cable attachment for top plate wheel assy
48700	Strut- bench back weldment
28040	Tie- 4 inch plastic
26100	Top Plate (original)- weight stack
39820	Top Plate Wheel assembly
39390	Top Plate Wheel weldment- not assembled with wheels and cable retainer
49090	Touch-Up Paint- Black bottle
20800	Touch-Up Paint- Black can
49100	Touch-Up Paint- Silver bottle
15520	Touch-Up Paint- Silver can
49080	Touch-Up Paint- White bottle
20790	Touch-Up Paint- White can
22050	Trim Strip- for wt.guard (34" partial/58" full- generic#- not for specific location)
18330	Tube Closure/End Cap- 1/2 X 1 1/2 BLUE for adjustment levers
53940	Tube Closure/End Cap- 1 inch round for current squat attachments (9/00)
38900	Tube Closure/End Cap- 1 inch round plug for original Pinnacle Bench
15780	Tube Closure/End Cap- 1 X 2 X 10-14GA used on Pinnacle Bench
42250	Tube Closure/End Cap- 1.75 inch for end of press handle
13100	Tube Closure/End Cap- 1 1/2 X 14 GA for bench
13090	Tube Closure/End Cap- 2 X 2 X 14 GA for main column at butterfly station
46990	Tube Closure/End Cap- 3/8 X 7/8 BLUE tube for Pinnacle Bench
51330	Tube Closure/End Cap- round single piece closure/retainer for foam rollers
15810	Tube Connector- 1/4-20 X 3/4 threaded insert for D-handle
11340	Tube Connector- 5/16-18 X 1" threaded insert for guide rods
16460	Upholstery- butterfly arm pad (2 required)
17110	Upholstery- Leg/ab station seat bottom
29230	Upholstery- seat back bench
59200	Upholstery- seat back butterfly station
21410	Upholstery- seat back leg/ab station
39090	Upholstery- seat bottom bench
19670	Upholstery- seat bottom butterfly station (19240 Board)
42340	Upholstery Set- 1800 complete
51250	Upholstery Set- Pinnacle Bench complete
39780	Upper Stack Support assembly- with pulley
39280	Upper Stack Support- without pulley
39080	Washer- .688 X .39 X .03 black nylon for C-1 bench
41220	Washer- .875 X .39 X .093 black nylon for small floor piece
49310	Washer- 1.62 X 1.14 X .065
42240	Washer- 3/8 blk SAE for old-style frame bolts OBSOLETE (not replaced)
12620	Washer- 7/8-16 X 1/2 X 14GA
17950	Washer- black nylon
15910	Washer- finishing for D-handle and butterfly arm pads

Vectra On-Line 1800	
Part #	Part Description
26130	Washer- neoprene bumper for top plate- standard
13750	Washer/Bushing- 1.5 X 1 X 14 for b/fly arms/cams (use w/#12340 cotter)
47090	Weight Plate- box of five original 10 pound plates
26061	Weight Plate- box of five original 15-pound plates
17021	Weight Plate- original 10 pound